

# **“Reversing the Secularization of the Church”**

**A Creationist's Look at Biblical Compromise  
& its Effect on the Church**

**By J.D. Mitchell, MBS**

**[www.creationengineeringconcepts.org](http://www.creationengineeringconcepts.org)**

**2017**

## **The Three Easy Steps to Secularism in the Church:**

- 1. Accept millions of years – which easily leads to...**
- 2. Acceptance of biological macroevolution – which easily leads to...**
- 3. Compromise, biblical irrelevance and a secularly influenced Church.**

## DEFINITION:

Christian: an adherent of Christianity.

Christianity: the one-true religion derived from the life and teachings of the God-man **Jesus Christ**, based on the **Bible** as sacred scripture, and traditionally professed by millions for 2,000 years.

## **DEFINITION:**

Secularism: The anti-religious (**especially anti-Christian**) view that true knowledge can only be found through rational or empirical means. Secularists live their lives with an orientation toward the present world only, as opposed to the Christian view that life is everlasting.



# **WHY IS SECULARISM SO STRONG IN AMERICAN CULTURE TODAY?**

## **Answer:**

1. Most public and many Christian educators have been taught to believe Secularism is better for the culture than is Christianity. The mantra often heard is “separation of church and state.”
2. These educators indoctrinate their students to believe the same way.
3. So in education, entertainment, business, the media, the court systems, politics; in fact, the whole culture is led to believe, by our education system, that Secularism is the best way of thinking and acting in the world.

## **A SPECIFIC EXAMPLE:**

**A 2015 Pew Research Center poll (USA) reflects the impact of decades of secular education and legal rulings outlawing dissenting scientific views: More than 70 percent of young Americans (30 and younger) now embrace molecules-to-man evolution and reject special creation.**

# **HOW TO RECOGNIZE SECULARISM IN THE CHURCH:**

1. The Gospel message is watered down and the salvation message is not consistently preached. Cultural social “justice” directs the gospel message.
2. Jesus Christ is not continually exalted as the Creator God.
3. The Bible is not emphasized as God’s authoritative, inerrant and inspired word - from the very first verse.

## **HOW TO RECOGNIZE SECULARISM IN THE CHURCH:**

- 4. Perversity, as defined in the Bible, is accepted, or even promoted.**
- 5. Group Bible study is not the top priority it once was, and is replaced with secular “conversation” or is completely absent.**
- 6. In services & activities, there is an emphasis on entertainment instead of worship and edification.**

# **HOW TO RECOGNIZE SECULARISM IN THE CHURCH:**

7. Creation science and biblical apologetics are resisted or rejected.
8. Evolution and deep time are acceptable as scientific facts.
9. Moral relativism can be part and parcel of the church culture.

*All Scripture is God-breathed and is useful for teaching, rebuking, correcting and training in righteousness, so that the man of God may be thoroughly equipped for every good work.*

**2 Timothy 3:16**

*See to it that no one takes you captive through hollow and deceptive philosophy, which depends on human tradition and the basic principles of this world rather than on Christ.*

**Colossians 2:8**

## **2 TIMOTHY 4:3-4:**

*For the time will come when men will not put up with sound doctrine. Instead, to suit their own desires, they will gather around them a great number of teachers to say what their itching ears want to hear. They will turn their ears away from truth and turn aside to myths.*



# GOD CANNOT LIE!

**(Titus 1:2, Hebrews 6:18)**

**THE MAIN CULPRIT:**

**ENLIGHTENMENT THINKING**



**ENLIGHTENMENT THINKING:**

**MAN DOES NOT NEED GOD!**

“This tendency to equivocate and accommodate has been felt most keenly in evangelical seminaries and liberal arts colleges, the institutions which should be providing intellectual leadership for the Bible-believing Christian community. The factor of peer pressure seems to be more intimidating among Christian academics than any other group. The desire for acceptance by their professional colleagues in the secular universities, the supposed necessity to earn advanced degrees in such secular universities (there are still no true Christian universities!), and the rush to attain institutional accreditation from secular accrediting agencies have all been powerful and effective compromise generators!”

**“But of course, ‘none dare call it compromise!’ No evangelical would ever admit to *compromising* with evolutionary humanism. They simply call it ‘interpretation.’”**

**Henry Morris, 1983**

“Pandering to the evolutionary mindset (of secular academia) appeals to the pride of mankind, whereas submissions to the Word of God requires humility. Universities are steeped in elitism and academic pride. There are huge rewards for being part of the prideful system and huge disincentives for not conforming. Thus, sadly, many Christians succumb to the temptations and blend into the scenery, never standing against the God-less indoctrination. They find ways of melding their ‘faith’ with the prevailing secular way of thinking.”

Dr. Don Batten, May, 2017

**“Church leaders who compromise the Word of God can be far more effective at destroying faith than an atheist professor railing against God. This is because one can easily recognize the wiles of the enemy when it comes from self-professed opposition. It is not as obvious when the deception comes from within.”**

**Don Batten, May, 2017**

*For since the creation of the world God's invisible qualities – his eternal power and divine nature – have been clearly seen, being understood from what has been made, so that men are without excuse. For although they knew God, they neither glorified him as God nor gave thanks to him, but their thinking became futile and their foolish hearts were darkened. Although they claimed to be wise, they became fools...*



*and exchanged the glory of the immortal  
God for images made to look like mortal  
man and birds and animals and reptiles.  
Therefore God gave them over to...  
sexual impurity...  
shameful lusts...  
a depraved mind...*

**Romans 1:20-28**

## 2 Corinthians 4:3-4

*And even if our gospel is veiled, it is veiled to those who are perishing. The god of this age has blinded the minds of unbelievers so that they cannot see the light of the gospel of the glory of Christ, who is the image of God.*

## **Ephesians 4:18**

*They are darkened in their understanding and separated from the life of God because of the ignorance that is in them due to the hardening of their hearts.*

# PRESUPPOSITIONS:

## **PRESUPPOSITIONS OF EVOLUTIONARY THINKING:**

- **There is no God or God is irrelevant**
- **Everything came from nothing**
- **All lifeforms evolved from common ancestors over millions of years.**
- **Homology alone proves the evolution of all extinct and living lifeforms.**

# **PRESUPPOSITIONS OF CREATIONIST THINKING:**

- In the beginning God created everything.
- The Bible is God's true word to mankind.
- God created in six ordinary days only thousands of years ago. He created according to kinds.
- A worldwide Flood destroyed all land animals and humans, except for those on Noah's Ark some 4500 years ago.

**INTERPRETATIONS**  
**≠**  
**FACTS**

**“People can and do believe anything. You personally can believe anything that you want. But, Christians must realize that evolution and millions of years are not contained in the Bible and are instead presuppositional concepts based directly on the philosophies of atheism and deism.”**

**J.D. Mitchell**





Chadwell

*W. Whitney*

PRINCIPLES

OF

GEOLOGY;

OR

THE MODERN CHANGES OF THE EARTH AND ITS  
INABITANTS

CONSIDERED AS ILLUSTRATIVE OF GEOLOGY.

BY

SIR CHARLES LYELL, M.A. F.R.S.

MEMBER OF THE NATIONAL ACADEMY OF SCIENCES; LECTURER OF "A MANUAL OF  
ELEMENTARY GEOLGICAL," "LECTURES ON EARTH HISTORY," "A MANUAL  
OF THE SCIENCE OF GEOLOGY," ETC. ETC.

NEW AND REVISED SEVENTH EDITION.

Illustrated with Maps, Plates, and Woodcuts.

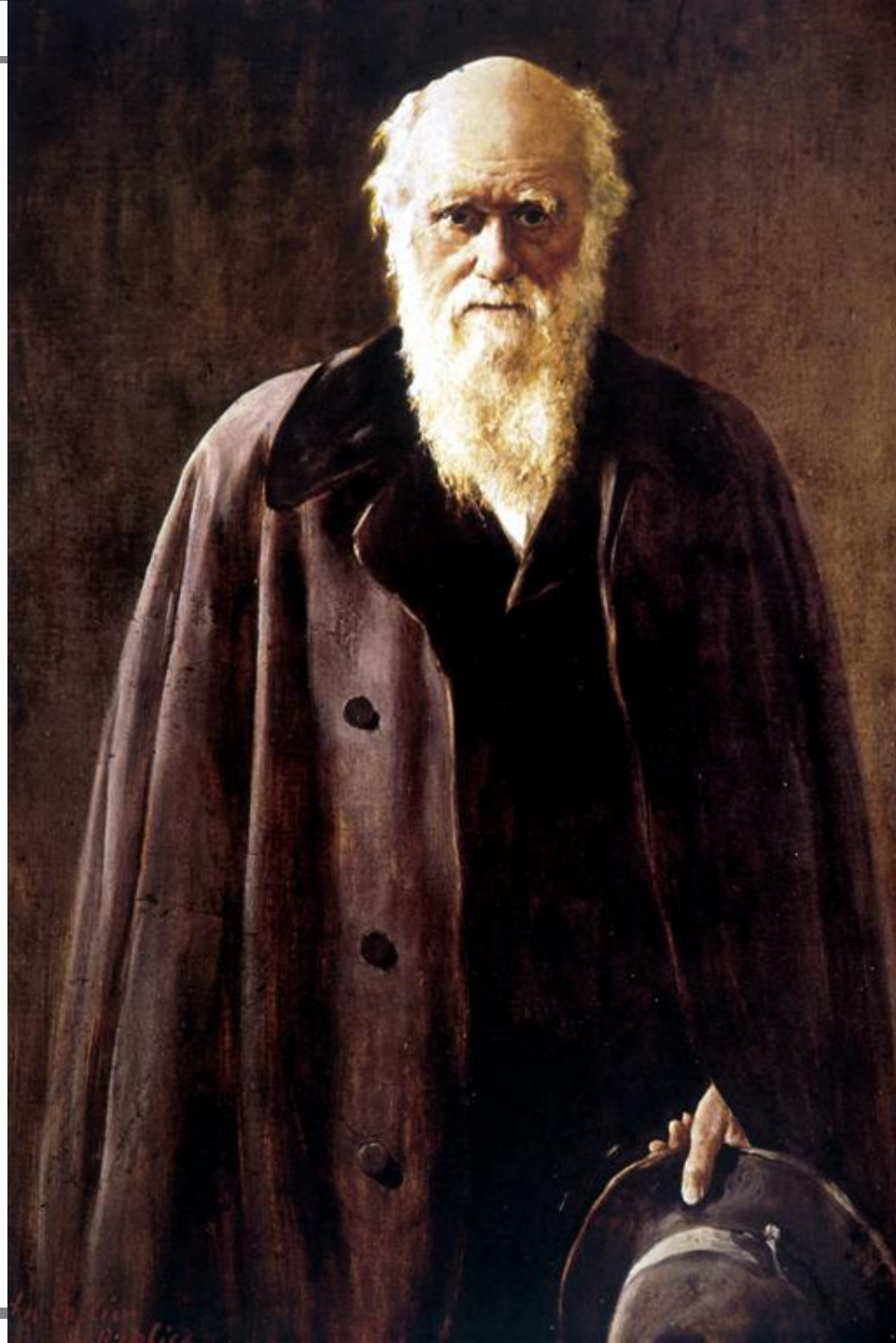
NEW YORK:

D. APPLETON & CO., 238 & 240 NASSAU ST.  
KNOX.

# UNIFORMITARIANISM:

“The present is the key to the past.”

A philosophical principle of geology devised in the late 18<sup>th</sup> and early 19<sup>th</sup> centuries so as to minimize geologic catastrophe in the past and to preclude a worldwide Genesis flood.



“To Charles Lyell, Esq. F.R.S. This second edition is dedicated with grateful pleasure, as an acknowledgement that the chief part of whatever scientific merit this journal and the other works of the author may possess, has been derived from studying the well-known and admirable *Principles of Geology*.”

**In *The Voyage of the Beagle*, 1845 by Charles Darwin**

**THE CHURCH'S CATASTROPHIC  
MISTAKE WAS TO ACCEPT  
UNIFORMITARIAN GEOLOGY  
AND DEEP TIME - AND THIS WAS  
EVEN BEFORE DARWIN!**

**Lyell's books: 1830-33**  
**Darwin's book: 1859**

# SCRIPTURAL GEOLOGY;

OR

## AN ESSAY

ON THE

HIGH ANTIQUITY ASCRIBED TO THE ORGANIC  
REMAINS IMBEDDED IN STRATIFIED ROCKS:

Communicated, in Abstract, to the Geological  
Section of the British Association, at the  
Annual Meeting held in Newcastle.

IN TWO PARTS.

*Part I.—Proving that the Strata, instead of requiring myriads  
of ages for their formation, may have been deposited nearly about  
one period.*

*Part II.—Shewing that the Deluge was the period, when all the  
Secondary and Tertiary Rocks were formed.*

---

BY

THE REV. GEORGE YOUNG, D.D.:

*M. W. S.; &c; &c;*

*Author of a Geological Survey of the Yorkshire Coast; &c.*

---

LONDON:

SIMPKIN, MARSHALL, AND CO.:

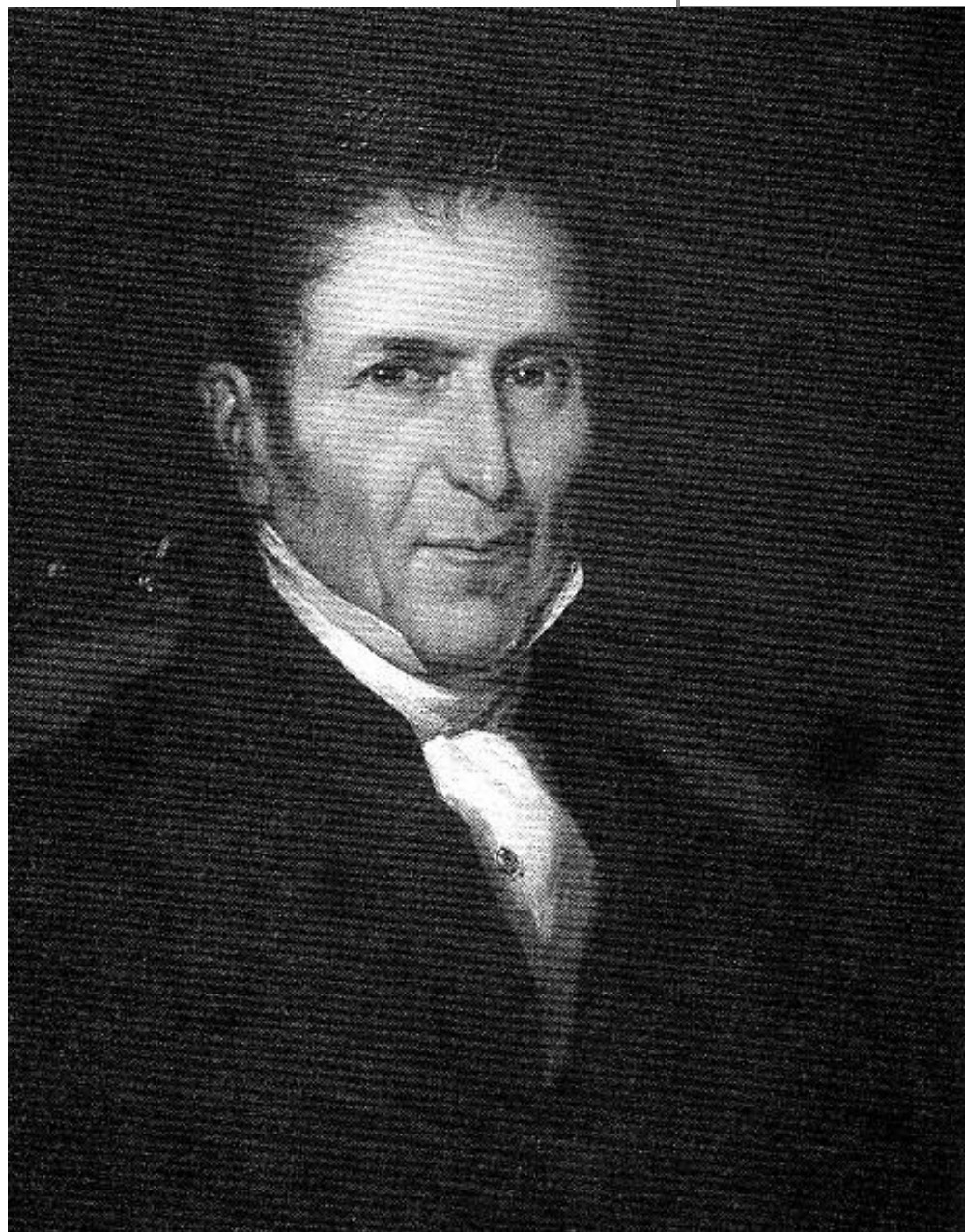
OLIPHANT AND SON, EDINBURGH: M'LEOD, GLASGOW:

AND ALL OTHER BOOKSELLERS.

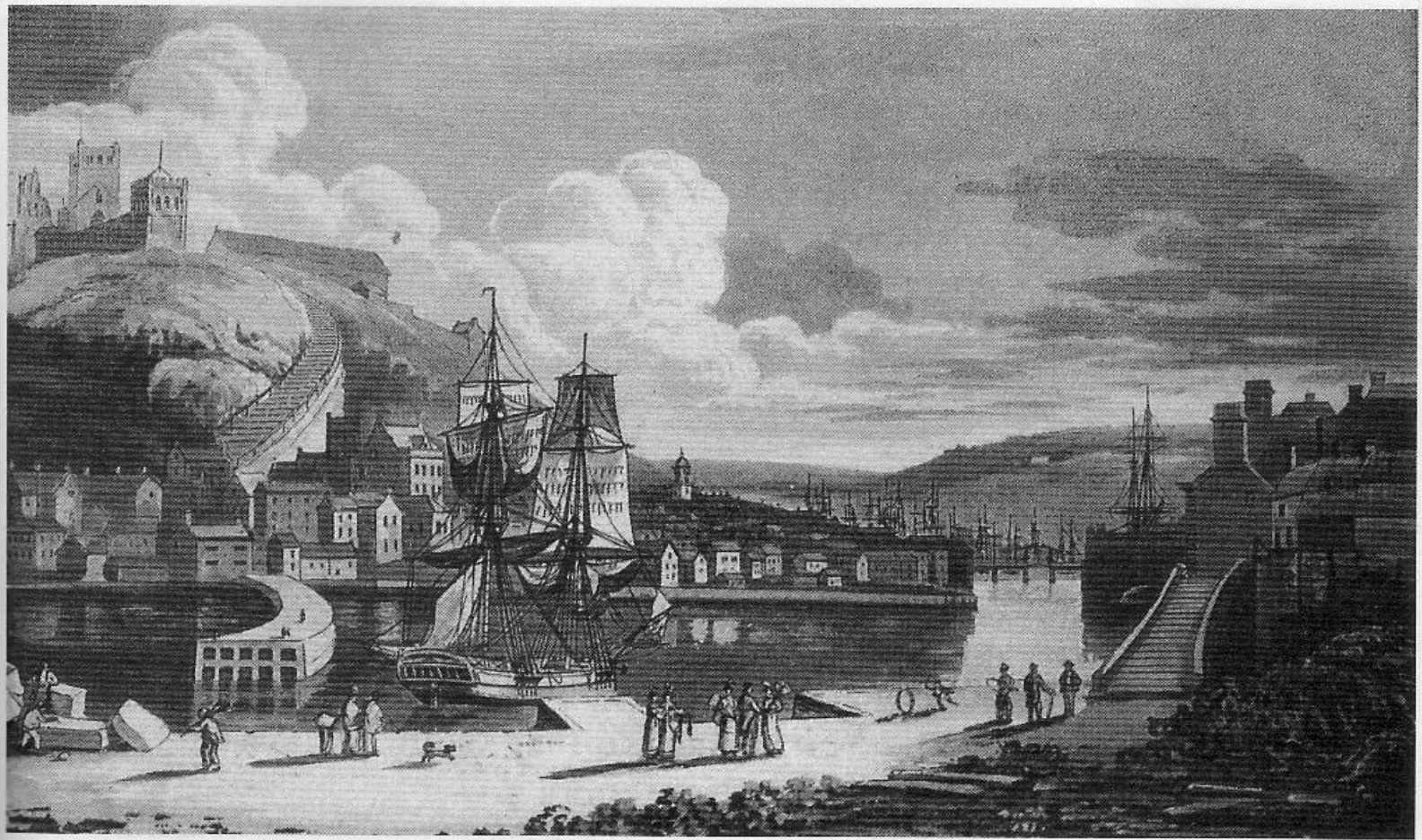
---

1838.









WHITBY, YORKSHIRE, ENGLAND.



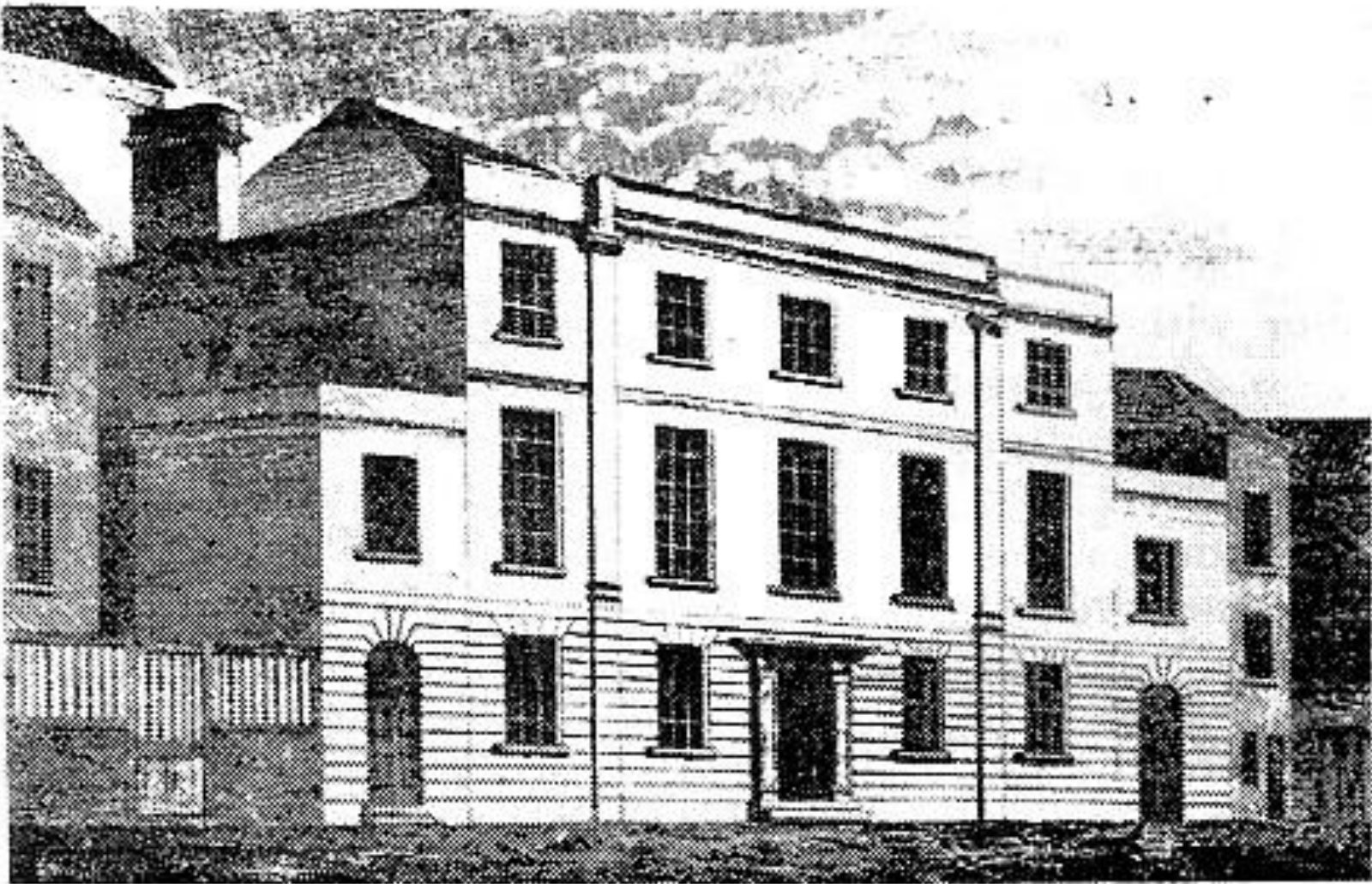


Image from the Whitby Museum

# **GEOLOGICAL REALITIES POINTED OUT BY GEORGE YOUNG:**

“No collector [of geological facts] has been more indefatigable than Mr. Lyell; and yet none is more given to theorizing. Now, if theories wild and dangerous be advanced by one party; another may be allowed to bring forward a hypothesis more sober and rational.” (p. iii)

# **GEOLOGICAL REALITIES POINTED OUT BY GEORGE YOUNG:**

Geological scientific facts and evidences of the time indicated a global flood that better matched the descriptions of scripture than the deep time imaginations of Lyell and others. (p. iv)





**FOSSIL  
RECORD**

**NOAH'S  
FLOOD**

**=**

**DEATH  
PAIN  
KILLING  
DISEASE  
THORNS  
STRUGGLE  
SUFFERING  
EXTINCTION**

# **GEOLOGICAL REALITIES POINTED OUT BY GEORGE YOUNG:**

It is not by name calling, “but by strong arguments, that the cause of truth is to be established.” (p. iv)

# **GEOLOGICAL REALITIES POINTED OUT BY GEORGE YOUNG:**

**“The general conformity of the strata, and their undisturbed succession, indicate that they must have been deposited about the same era.” (p. 23)**





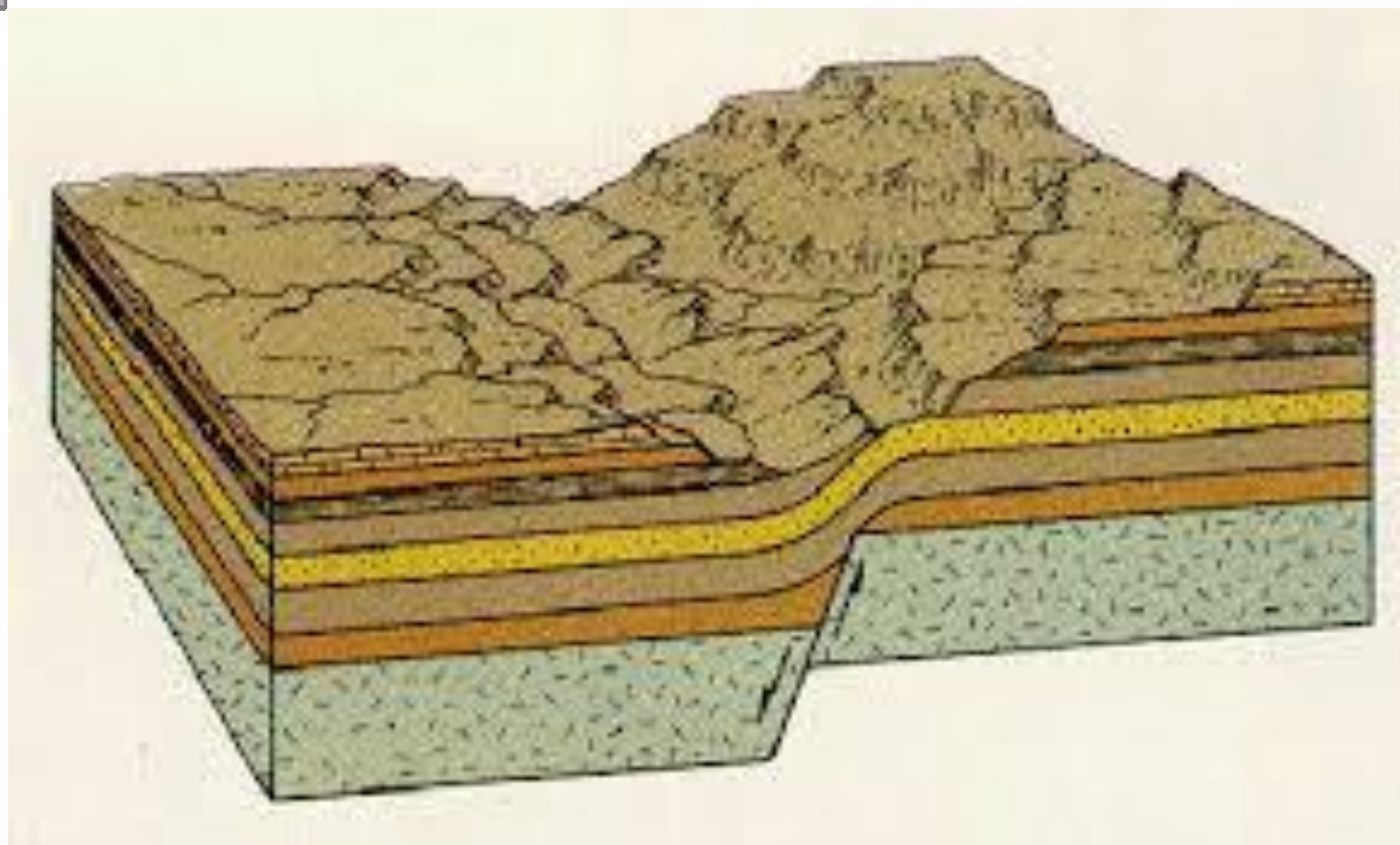




# **GEOLOGICAL REALITIES POINTED OUT BY GEORGE YOUNG:**

**“The breaks or faults, in the strata, affect the whole mass of rocks, in almost every instance where they occur, instead of being limited by the boundaries of particular formations.”  
(p. 24)**





# **GEOLOGICAL REALITIES POINTED OUT BY GEORGE YOUNG:**

“Several of the smaller faults, or slips, have taken place when the strata were but half consolidated, so hard as to break, yet so soft as also to bend... there is also a real bending of the mass of the stratum, showing that it was somewhat flexible when the break took place. Now, as these breaks and bendings affect the lowest beds as much as the highest, the one cannot be much older than the other; the whole having been in a semi-indurated state at the same time.” (p. 25)





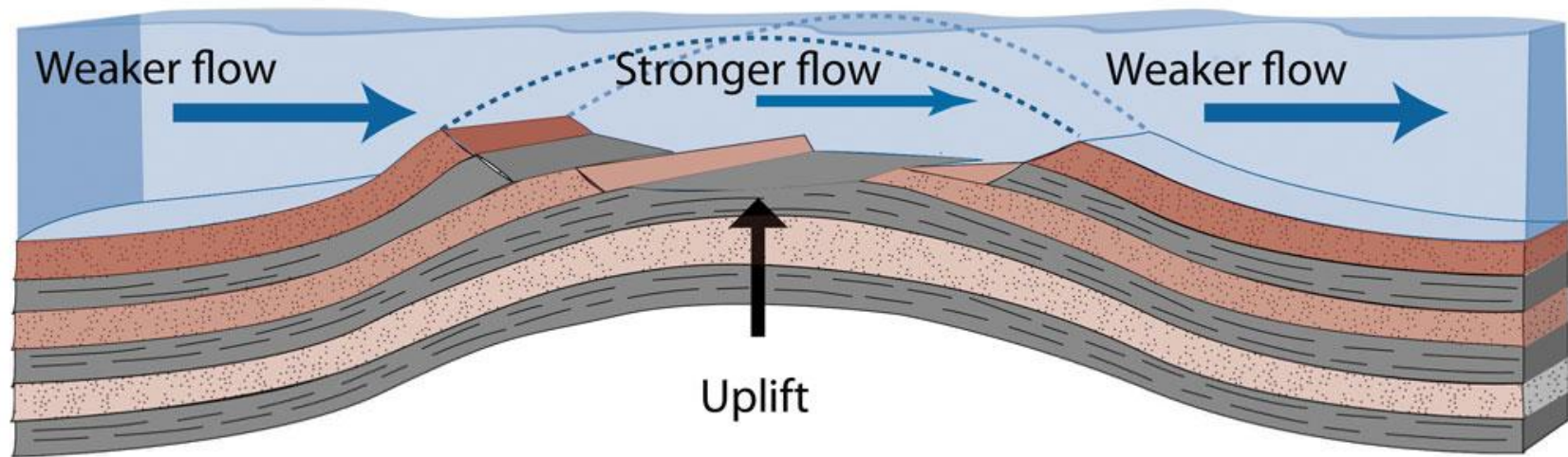
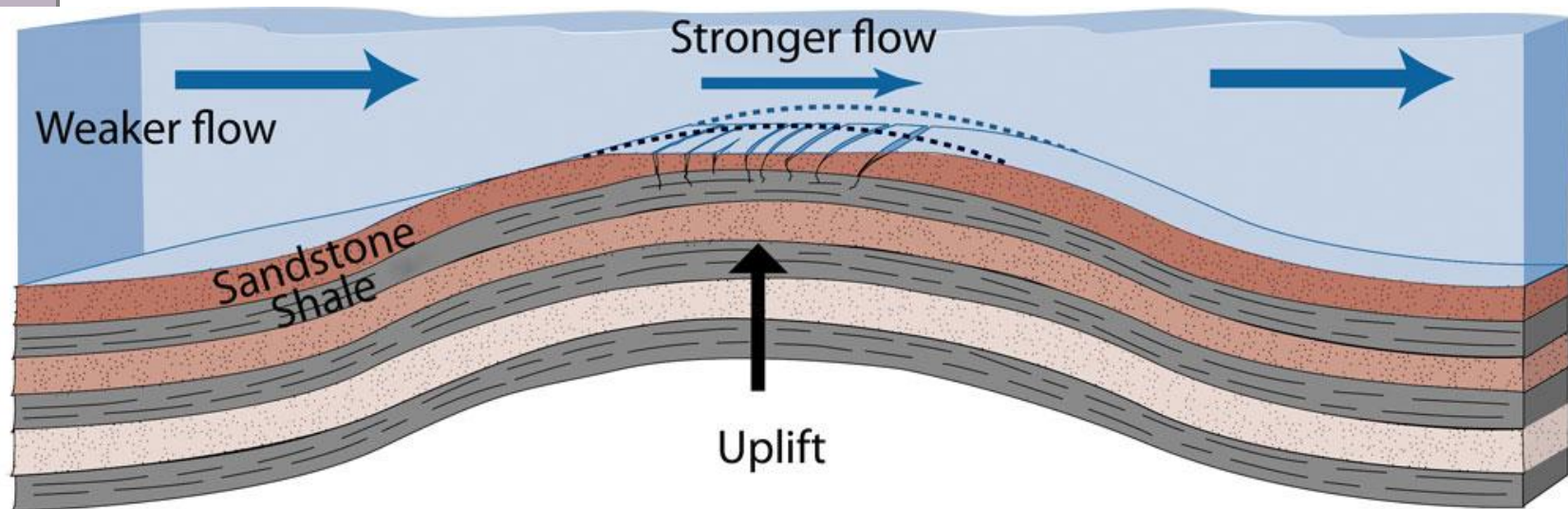




## **GEOLOGICAL REALITIES POINTED OUT BY GEORGE YOUNG:**

**“The denudations of the strata speak the same language. When the dry land was beginning to appear, the tides and currents of the retiring ocean, sweeping over the surface, have borne away immense masses of the strata, scooping out valleys, and forming river-courses, bays, creeks, and other irregularities.” (p. 25)**





# **GEOLOGICAL REALITIES POINTED OUT BY GEORGE YOUNG:**

**“The marks of violence and severe pressure, in many of the organic remains prove that the strata containing them have not been deposited in a slow and gradual way; while the same thing appears from the high state of preservation in which fossil fishes are frequently found.” (p. 27)**





*Significant Aracaria Pine Fossil Tree from N. W. Colorado*

The Aracaria Pine grows "round" like other Pine trees. This fossil was discovered compressed into this "oval" shape under more than twenty layers of sedimentary rock. These conditions required the tree to still be "fresh and pliable" while the twenty layers were being formed. These Morrison Formation rock layers extend over eleven states and into Canada. Such extensive rapid sedimentation required a Flood of Biblical proportions.









**GAR FISH**  
*Lepisosteus*  
Middle Eocene  
55-60 million years old  
5' - 7'

## **GEOLOGICAL REALITIES POINTED OUT BY GEORGE YOUNG:**

**“The fossil fishes...are often found in the finest condition, with no part of their structure injured; while we know that fishes left dead on the beach, or on the banks of rivers, begin to decay in a few hours...M. Agassiz has conjectured that the rate of deposition of these ancient strata must have been almost inconceivably rapid.” (p. 28)**





## **GEOLOGICAL REALITIES POINTED OUT BY GEORGE YOUNG:**

“When we see fossil animals such as large saurians crushed and broken, as under an enormous weight, it is plain that the strata containing them must have been formed so quickly, that the lower beds had not the time to harden, before the weight of the new strata over them was sufficient to crush them.” (p. 29)



PLATE III.

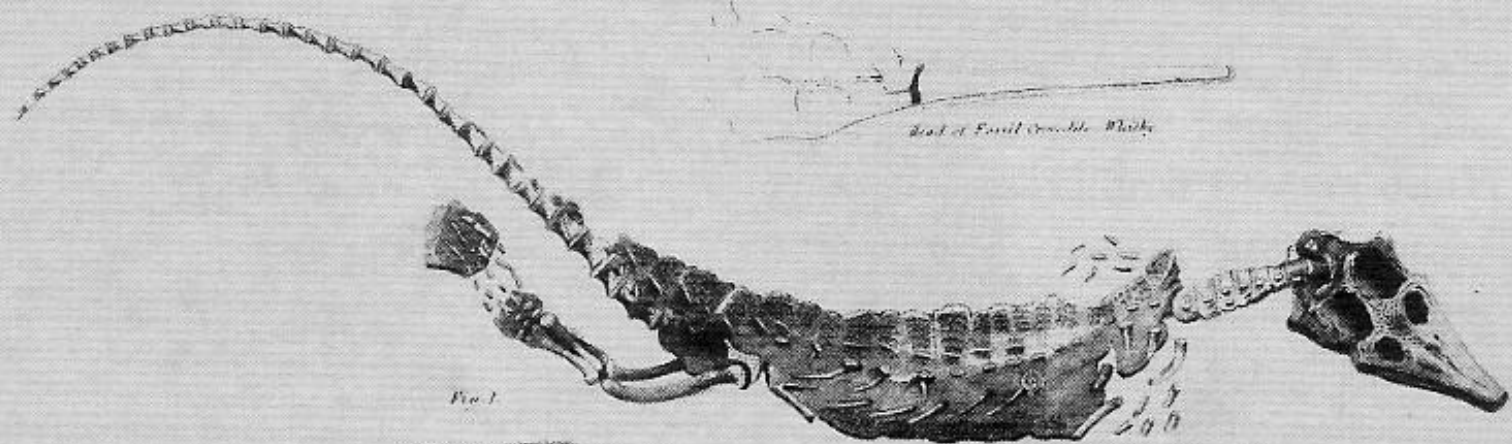
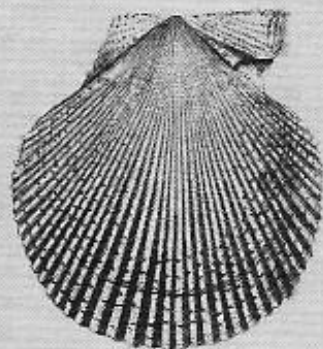


Fig. 1.

*Fossil Crocodile. Whith.*



*Pecten nautilus*  
*Island of Hawaii*

Fig. 2.

Fig. 3.



*Fulmaria tubifera*  
*Berwick on Forth*

# **GEOLOGICAL REALITIES POINTED OUT BY GEORGE YOUNG:**

“Why are there so many beds, in which there is not a single species identical with any existing species?

...[It has been] established by Mr. Lyell, in his Principles of Geology, II. pp. 66-67, that the animals and vegetables [plants] of our globe, are not equally distributed over the whole, but exist in groups, occupying peculiar districts.” (p. 34)





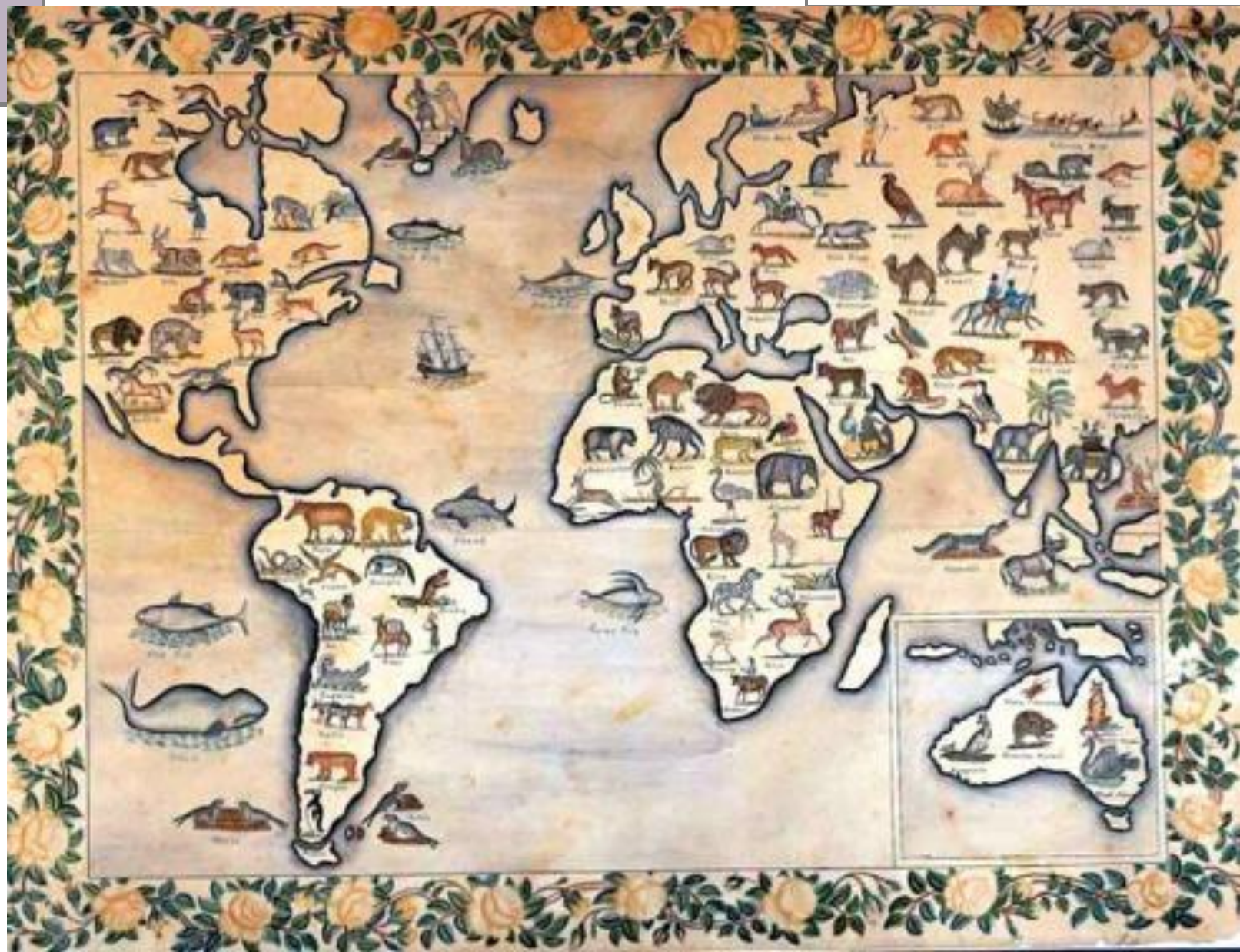
## **GEOLOGICAL REALITIES POINTED OUT BY GEORGE YOUNG:**

“And if we grant, what is extremely probable, that the animals and vegetables of the ancient world, were distributed over a much greater extent of surface, at least of productive surface, than there is in the present world; we need not be at all surprised at the variety of genera and species, discovered in stratified rocks.” (p. 35)

# **GEOLOGICAL REALITIES POINTED OUT BY GEORGE YOUNG:**

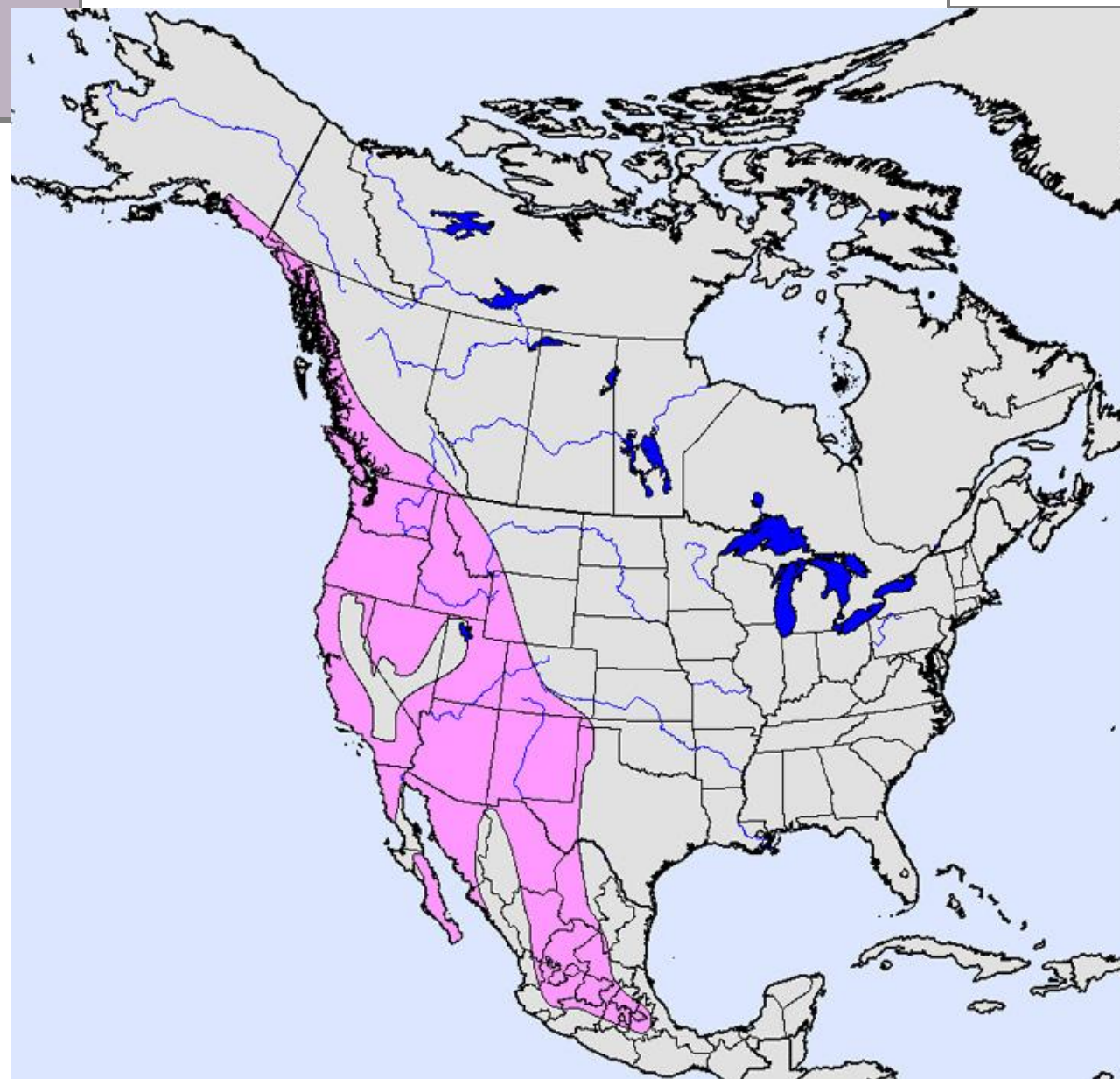
**“When we see so much diversity and beauty among the productions of the present world, can we doubt that the primitive world was no less richly furnished and adorned by the infinite Creator?” (p. 36)**





# Western Screech-Owl

*Megascops  
kennicottii*



- Permanent Resident
- Breeding Resident
- Nonbreeding Resident
- Passage Migrant
- Introduced
- Uncertain Status
- Vagrant

Map created by Terry Sohl,  
Data from NatureServe



## **GEOLOGICAL REALITIES POINTED OUT BY GEORGE YOUNG:**

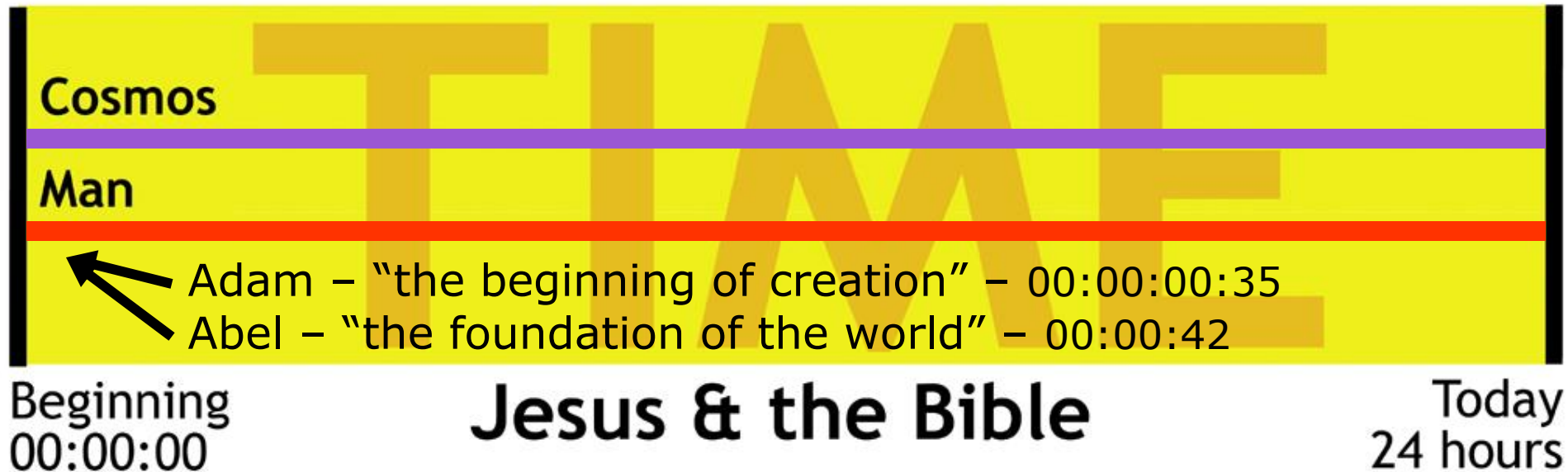
“Some modern geologists [assert] that to restrict the age of our planet to five or six thousand years, is to limit the displays of the Creator’s glory; that to assign millions of ages to our globe, must afford a much better exhibition of his riches; and that it is improper to think, that he would delay making our earth the theatre of his mighty works till so late a period. To this I reply...



# **GEOLOGICAL REALITIES POINTED OUT BY GEORGE YOUNG:**

...that it would be presumptuous in us to attempt to decide, what was the most fit period for creating the world; or what length of time was most proper for displaying the wonders of his power, wisdom, and goodness, in constructing our globe and replenishing it with diversified races of creatures." (p. 36)

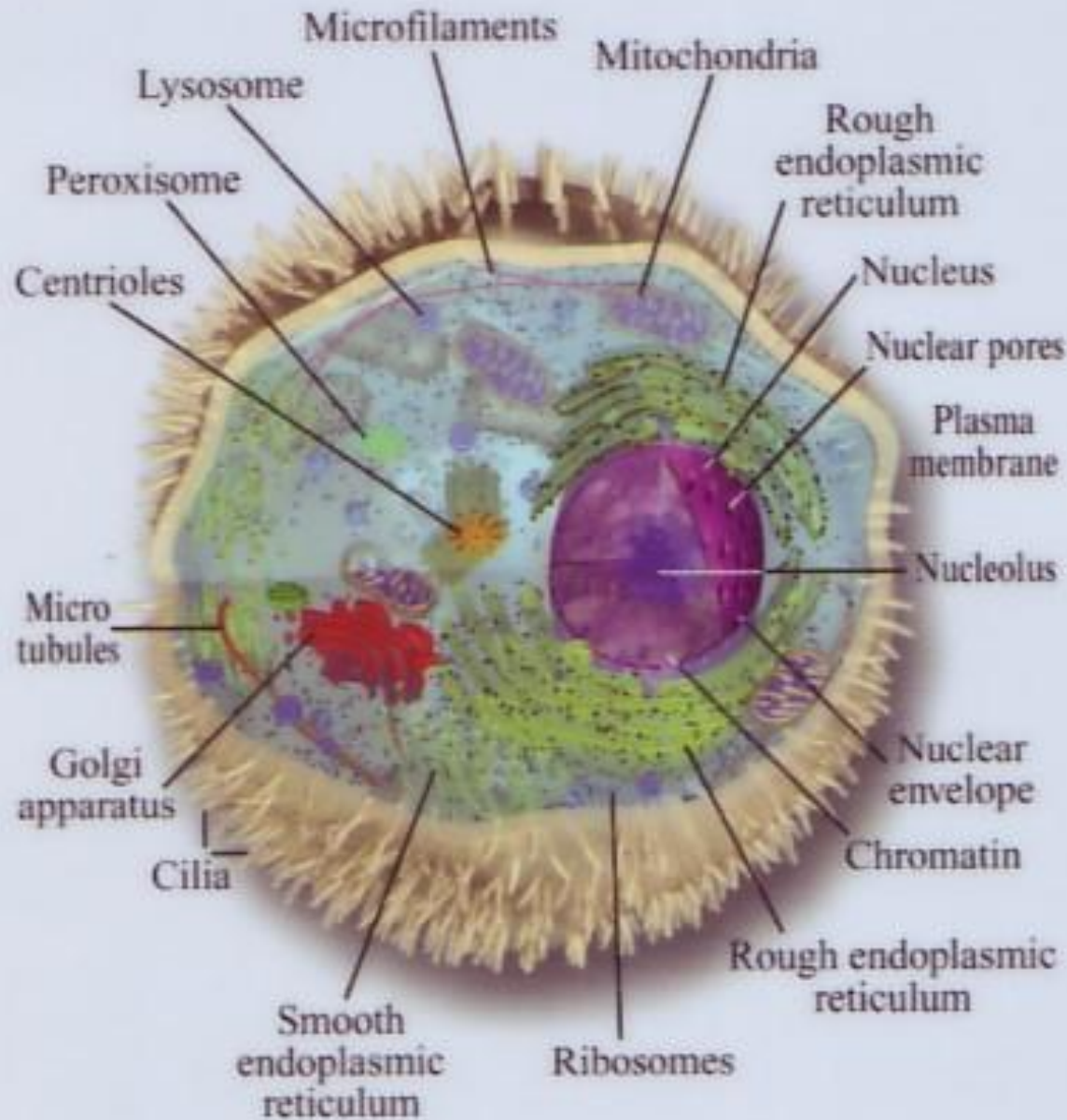
# History of the Cosmos and Man



# **GEOLOGICAL REALITIES POINTED OUT BY GEORGE YOUNG:**

**“At whatever time these curious fossil animals lived, we see an exhibition of infinite wisdom, in the mechanism of their bodies, and their adaptation to the purposes of life and enjoyment.”  
(p. 37)**

## Animal Cell



## **GENESIS 1:25:**

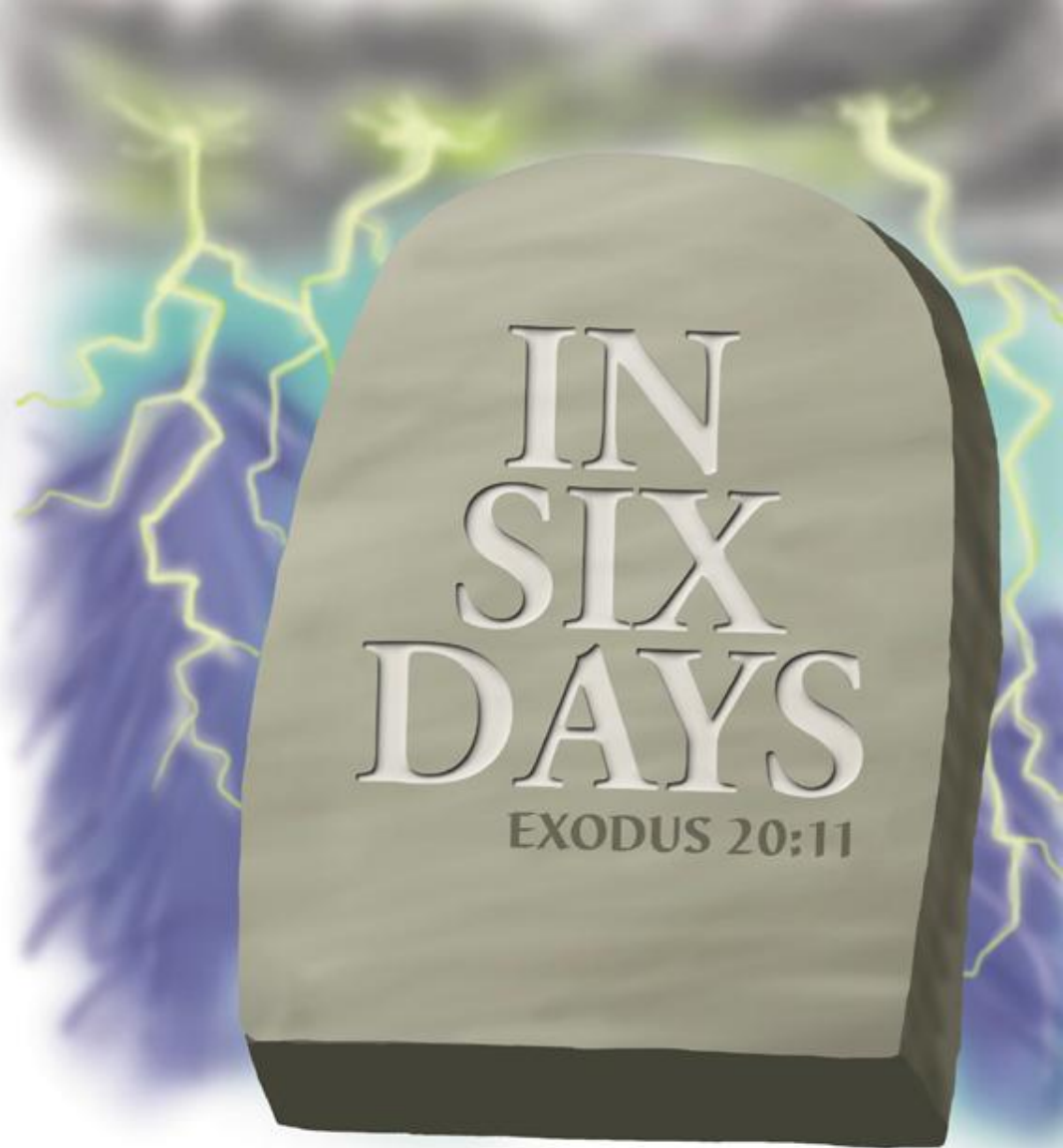
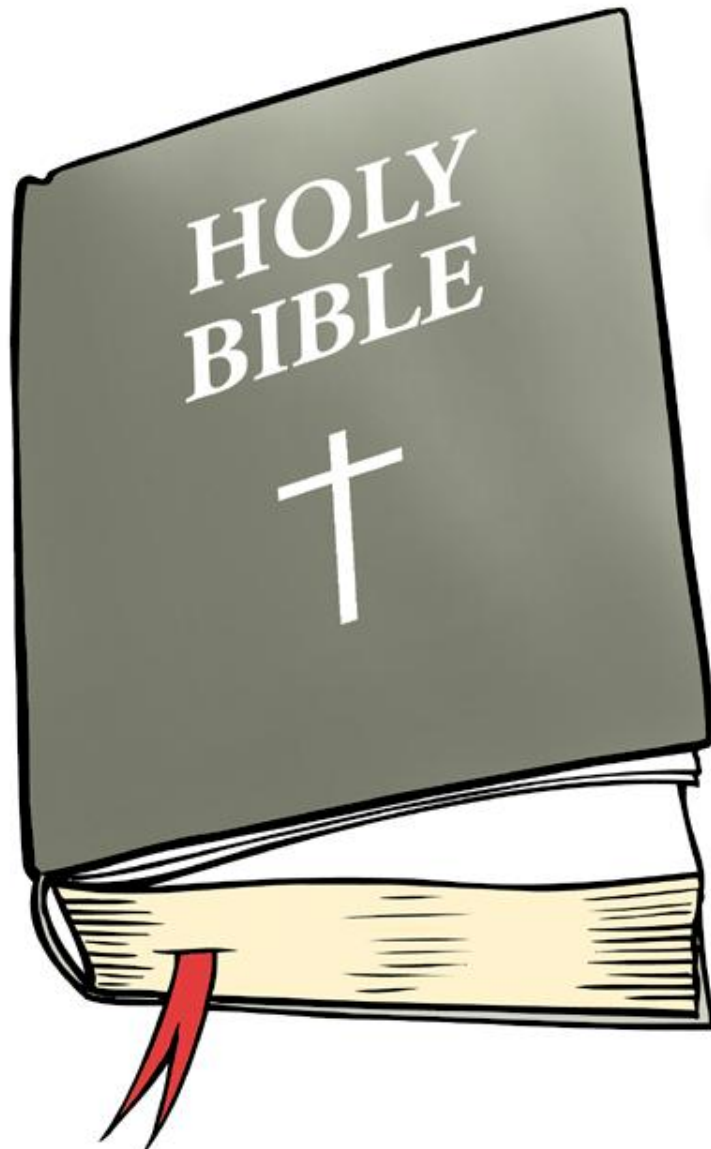
*God made the wild animals according to their kinds, the livestock according to their kinds, and all the creatures that move along the ground according to their kinds.*

# **DEEP TIME INCONSISTENCIES** **WITH THE BIBLE POINTED OUT BY** **GEORGE YOUNG:**

“It is true, that the Bible is not intended to teach us geology...yet we are sure, that the facts of science may be reconciled with the sacred page; and we may be permitted to doubt the truth of any theory, which makes that reconciliation impossible.” (p. 39)



**ALL SCRIPTURE IS  
INSPIRED BY GOD**  
2 TIMOTHY 3:16



**THIS SCRIPTURE WAS  
INSCRIBED BY GOD!**

EXODUS 20:11

© 2004 Answers in Genesis

# **DEEP TIME INCONSISTENCIES** **WITH THE BIBLE POINTED OUT BY** **GEORGE YOUNG:**

“The notion, that the six days of creation, may correspond with six successive formations, each extending through an indefinite period, seems now to be abandoned as utterly untenable.” (p. 40)



**Theologians**

**Christian  
Leaders**

**'Day' in  
Genesis One  
means an  
ordinary day.**

**Seminary  
Professors**

**Christian  
College  
Professors**

**Ministers**

**Theologians**

**'Day' in  
Genesis One  
cannot be an  
ordinary day  
because of  
millions  
of years.**

**Christian  
Leaders**

**Seminary  
Professors**

**Christian  
College  
Professors**

**Ministers**

# **DEEP TIME INCONSISTENCIES** **WITH THE BIBLE POINTED OUT BY** **GEORGE YOUNG:**

“It may likewise be observed, that, according to scripture, it was man’s disobedience that brought death into the world, with all our woe; but according to this geological system, death had reigned and triumphed on the globe, in the destruction of numerous races of creatures, thousands of years before man existed.” (p. 42)



# EVOLUTION

MILLIONS OF YEARS



**DEATH**  
Suffering Disease Bloodshed



**MAN'S  
EXISTENCE**

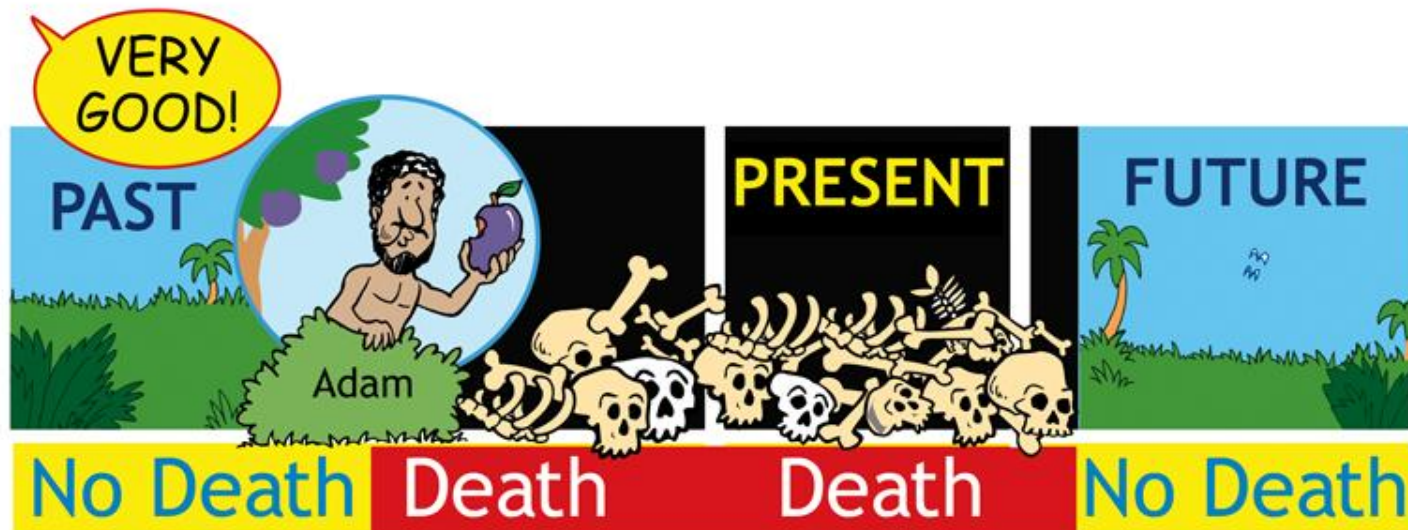
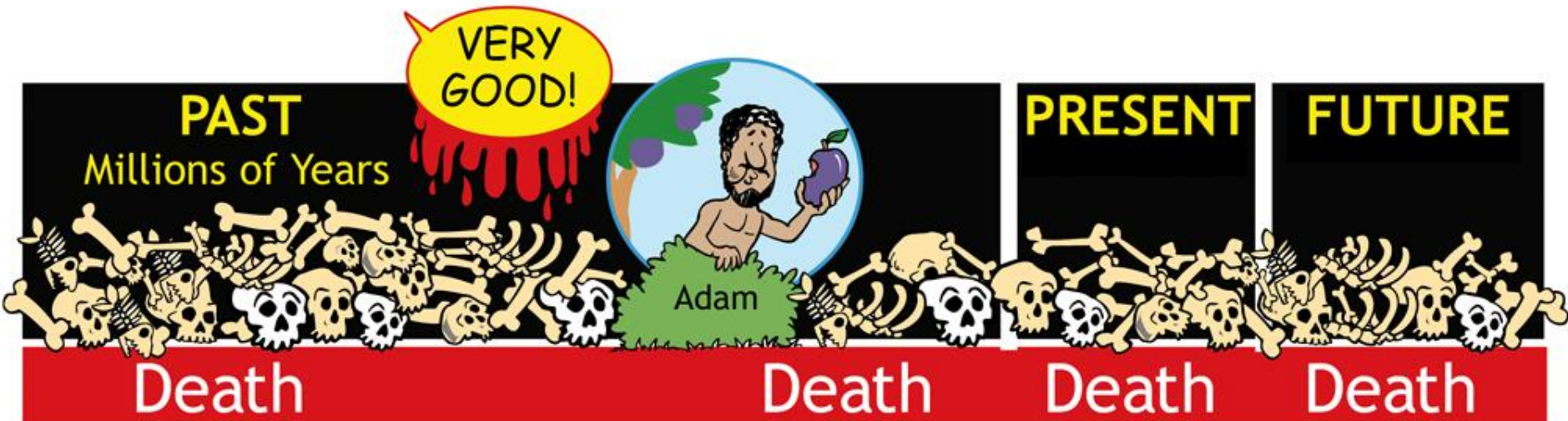
# CREATION

**MAN'S  
ACTIONS**

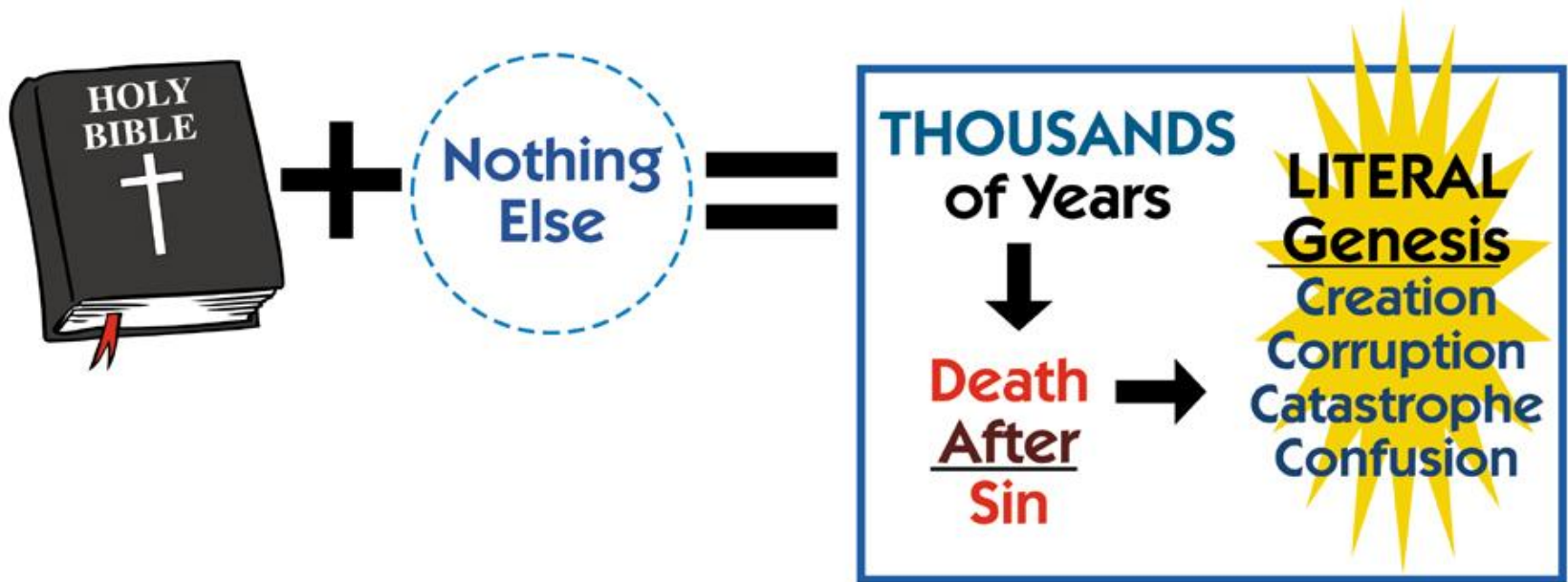


**SIN**









# **DEEP TIME INCONSISTENCIES** **WITH THE BIBLE POINTED OUT BY** **GEORGE YOUNG:**

“But the strongest scriptural objection to this system is, that it leaves no room for the deluge, that great catastrophe so distinctly recorded in sacred history... and the Bible plainly and repeatedly describes the deluge as universal: ‘All the high hills, that were under the whole heaven, were covered.’” (p. 42)



# **DEEP TIME INCONSISTENCIES** **WITH THE BIBLE POINTED OUT BY** **GEORGE YOUNG:**

"The time occupied by this awful dispensation decidedly intimates that much more was contemplated by it, than merely the drowning of the earth's inhabitants." (p. 43)





## 2 Peter 3:4-6

*They will say, 'Where is this 'coming' he promised? Ever since our fathers died, everything goes on as it has since the beginning of creation.' But they deliberately forget that long ago by God's word the heavens existed and the earth was formed out of water and by water. By these waters also the world of that time was deluged and destroyed.*

# **DEEP TIME INCONSISTENCIES** **WITH THE BIBLE POINTED OUT BY** **GEORGE YOUNG:**

"An effusion of waters over the whole earth, so still as not to destroy the vegetation, is the kind of deluge fancied by some geologists: but such a deluge could not take place, without the most extraordinary miracles;-miracles uncalled for, and of which Moses gives not the slightest hint." (p. 44)



# **DEEP TIME INCONSISTENCIES** **WITH THE BIBLE POINTED OUT BY** **GEORGE YOUNG:**

"Indeed the Huttonian theory, which Mr. Lyell has embraced in a modified form, favors the dangerous sentiment, that the world is eternal; the author of that theory having distinctly maintained, that there is nothing to indicate that the world had a beginning, or that it will have an end."  
(p. 77)





*In the beginning God created  
the heavens and the earth.*

**Genesis 1:1**



# UNIFORMITARIANISM:

“The present is the key to the past.”

A philosophical principle of geology devised in the late 18<sup>th</sup> and early 19<sup>th</sup> centuries so as to preclude a worldwide Genesis flood.

But remember: The past is unproven and unprovable without historical documentation.

## UNIFORMITARIANISM:

“The present is the key to the past.”

Uniformitarianism does not match common sense. In our real life experience we learn just the opposite, that is, that “the past is the key to the present.”

The past is unproven and unprovable without historical documentation.

# UNIFORMITY:

Secular “science” (aka Naturalism) is based upon the unproven assumption of materialistic uniformity. Naturalism operates upon a belief in the uniformity of nature even though it does not account for it.



## **REALITY:**

**“The past is the key to the present.”**

**Reality indicates that the past can be understood through validated historical records. The only valid historical record of the beginning is the Bible.**

**“Can the Secularization of  
the Church be Reversed?”**

**YES!**



HOW?

**ACCEPT REALITY &  
UNDERSTAND TRUTH**

# **REALITY DEFINING TRUTHS TO BE ACCEPTED:**

1. There are always major deleterious consequences to rejecting the Creator God; and compromising His Holy Word with secular ideas can oftentimes result in apostasy.
2. A person's accepted presuppositions are what determine his or her worldview.

## **REALITY DEFINING TRUTHS TO BE ACCEPTED:**

3. Naturalism (an atheistic philosophy or religion) is the foundational basis for secular thought.

4. Evolution and deep time (aka millions of years) are the foundational tenets of naturalism and must be presuppositionally accepted by faith by its adherents.



# **REALITY DEFINING TRUTHS TO BE ACCEPTED:**

5. Evolution and deep time are two sides of the same philosophical coin. Each needs the other and they cannot be viable hypotheses when separated.

# **REALITY DEFINING TRUTHS TO BE ACCEPTED:**

6. Neither naturalism nor creationism is technically scientific, but both are based on uniformity and God's providence. Uniformity and uniformitarianism are entirely different things.

# **REALITY DEFINING TRUTHS TO BE ACCEPTED:**

7. The “Enlightenment” was no such thing. Its main achievement was the replacement of God’s infallible revelation with the fallible ideas of men. It is a classic example of men running from the light into the dark.

## **REALITY DEFINING TRUTHS TO BE ACCEPTED:**

8. Truth is not determined by majority rule; and secularism is currently enforced in America and many other Western countries by anti-Christian fiat through academia, the mainstream media, political actions and the courts. This secular “truth” is not reality.

# **REALITY DEFINING TRUTHS TO BE ACCEPTED:**

9. The Geologic Timescale is a mental abstraction and is not an observable reality.

10. Secularism, while overtly anti-Christian, logically disintegrates because of its reliance on Christian presuppositions such as uniformity and the possibility of human rational thought.



**CORRUPTION**

**CATASTROPHE**



**CREATION**

**THE SEVEN C's  
OF HISTORY**

**CONFUSION**



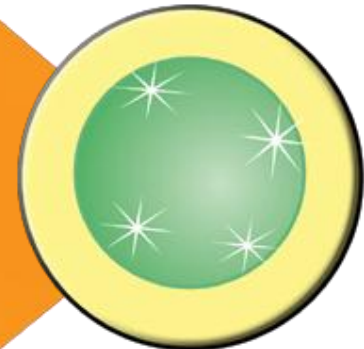
**CHRIST**



**CROSS**



**CONSUMMATION**



## **PSALM 19:**

**An Expression of the collaboration of  
God's General & Special Revelations**

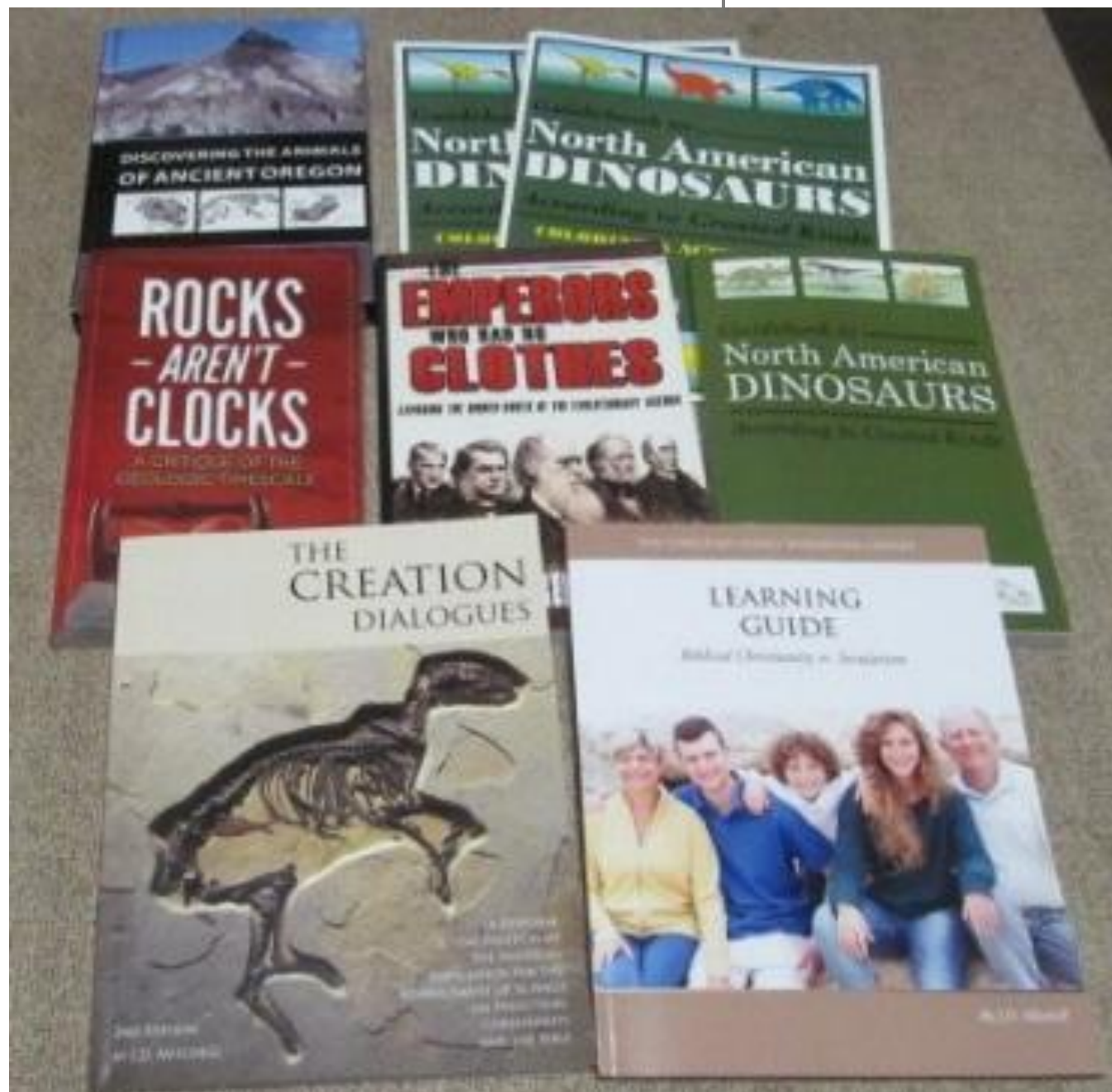
*The heavens declare the glory of  
God...*

*The law of the LORD is perfect...*

*Sanctify the Lord God in your hearts;  
and be ready always to give an  
answer to every man that asks you a  
reason of the hope that is in you with  
meekness and fear.*

**1 Peter 3:15**

**DO NOT HIRE THEM!**





## **The Christian Family Worldview Library**



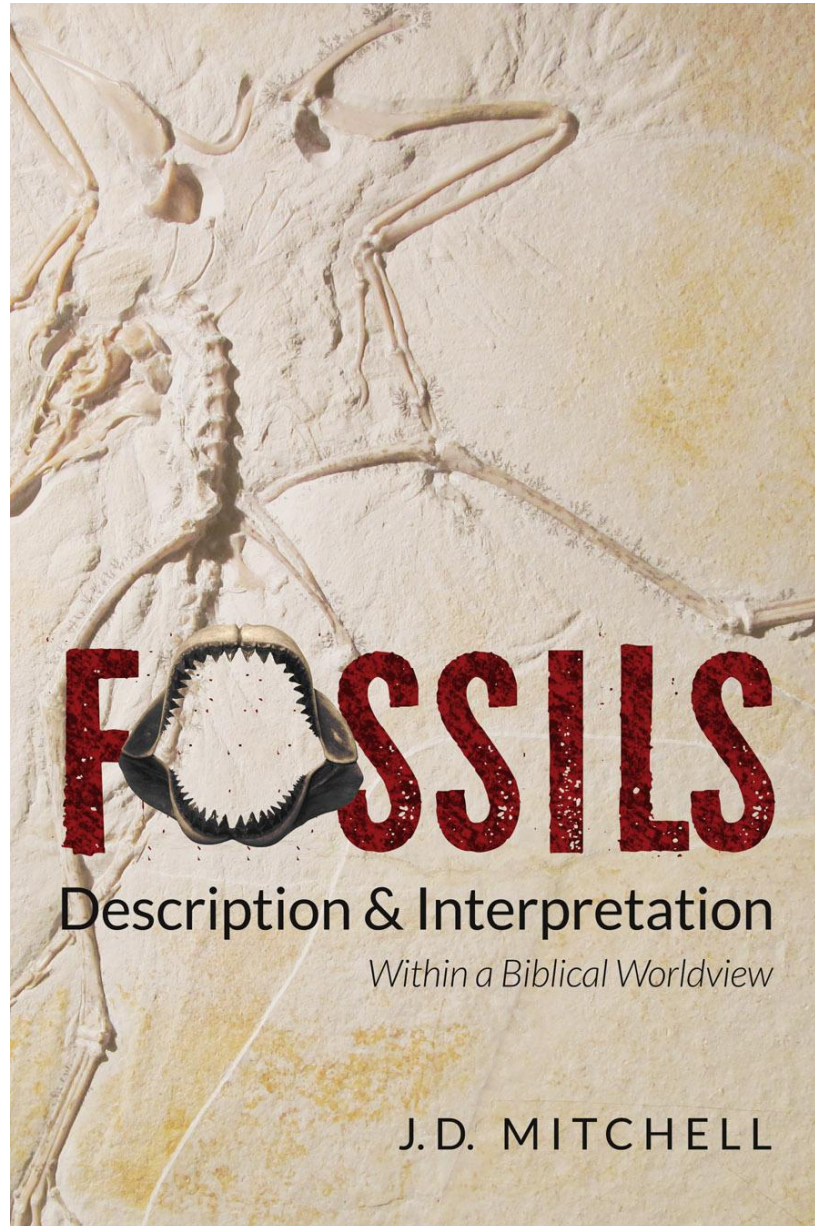
**Biblical Christianity vs. Secularism!**

The library includes these resources:

- ***The Christian Family Worldview Library Learning Guide***
- ***The Creation Dialogues – 2<sup>nd</sup> Edition***
- ***The Emperors Who Had No Clothes***
- ***Rocks Aren't Clocks***
- ***Discovering the Animals of Ancient Oregon***
- ***Guidebook to North American Dinosaurs According to Created Kinds***
- ***Two (2) Dinosaur Coloring & Activity Books***
- ***Plastic Storage Snap Case***

This library is designed to provide the information needed to learn the truth about, and the importance of, a proper biblical worldview – for every Christian family!

From Creation Engineering Concepts



# FOSSILS

Description & Interpretation

*Within a Biblical Worldview*

J.D. MITCHELL

# **“Reversing the Secularization of the Church”**

**A Creationist’s Look at Biblical Compromise  
& its Effect on the Church**

**By J.D. Mitchell, MBS**

**[www.creationengineeringconcepts.org](http://www.creationengineeringconcepts.org)**

**2017**