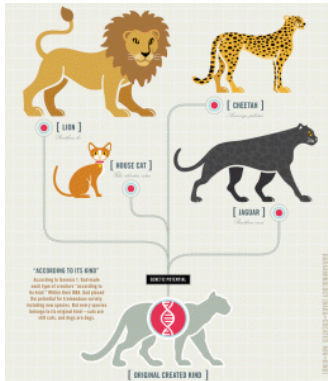


Evolution, Species and Kinds
Dr. Don Johnson speaking at
Atonement Free Lutheran Church
6905 172nd St NE, Arlington, WA
Friday August 25 at 7:00 PM



Description: After explaining the difference between micro- and macro- evolution and whether there's any science for connecting them, the difference between Biblical **kinds** and **species** will be described. The basics of neo-Darwinian biology and it's lack of verifiable evidence will be highlighted, causing thousands of scientists to abandon it. Information science will be highlighted as the biggest obstacle for the naturalistic scenarios, as the reality of millions of biological computers and computer programs in each cell (humans have 100 trillion) have been scientifically verified, with NO naturalistic explanation. **Evolution** can be explained as a

religion, and science actually supports Biblical insights.



Speaker: **Dr. Don Johnson** has earned PhD's in both Computer & Information Sciences from the University of Minnesota and in Chemistry from Michigan State University. He was a senior research scientist and consultant for 15 years, and taught 20 years in universities in Wisconsin, Minnesota, California, and Europe. Since "retiring," he has done consulting, speaking, and writing (4 books & several peer-reviewed papers). He has made presentations across the US and on most continents. His www.4iam.org Christian website has

links to several video presentations and printable flyers, as well as to his two secular science websites (peer-reviewed papers).

Refreshments plus books, DVDs, and pamphlets available at the resource tables afterwards.



The **Apologetics Forum of Snohomish County (AFSC)** helps equip Christians in the defense of **The Faith** in the postmodern world in three related areas: 1) Creation vs. Evolution, 2) Christian Apologetics, and 3) Biblical Worldview. **AFSC** provides a local Forum for lectures and DVD programs by knowledgeable presenters on these topics. More on **AFSC** at ApologeticsForum.org.