

The image features a central, glowing Earth with a yellow and orange top half, suggesting heat. White smoke or steam rises from the top of the globe. The bottom half of the globe shows blue oceans and green landmasses. The entire scene is set against a black background.

SOME LIKE IT HOT !

**An Alternative View to
Climate Change**

Larry Vardiman, PhD



IT'S HOT ENOUGH TO PUT THE OTHER SIGN BACK UP!!

CLIMATE CHANGE CRISIS

THE LEFT

FIGHT GLOBAL WARMING

HARVEI ©'16

Hysterical Predictions by Global Warming Alarmists

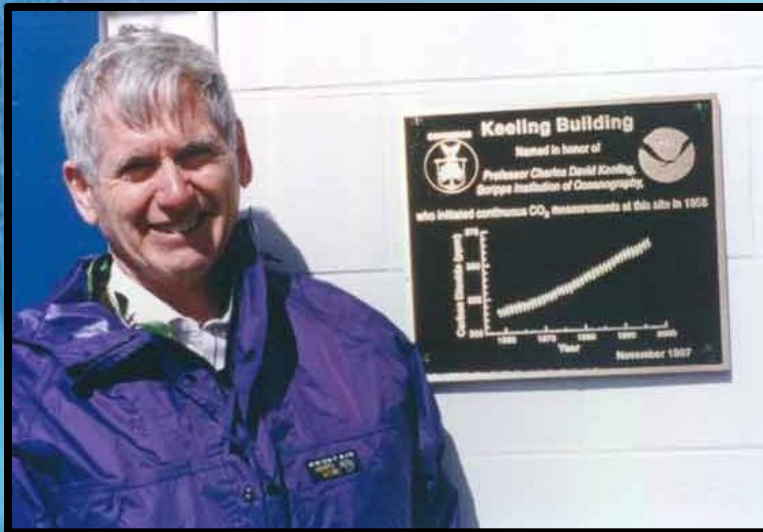
- **Glaciers Will Melt !**
- **Sea Level Will Rise !**
- **Coastal Cities Will be Flooded !**
- **The Arctic Will be Ice Free by 2014 !**
- **Polar Bears Will Drown !**
- **Only a Few Years to Save the Planet !**

Basic Motivations behind Climate Change Concerns

- **Globalism**
- **Research Funding**
- **Fear of a new Ice Age**
- **Anti-human Movement**



Roger Revelle



Charles Keeling

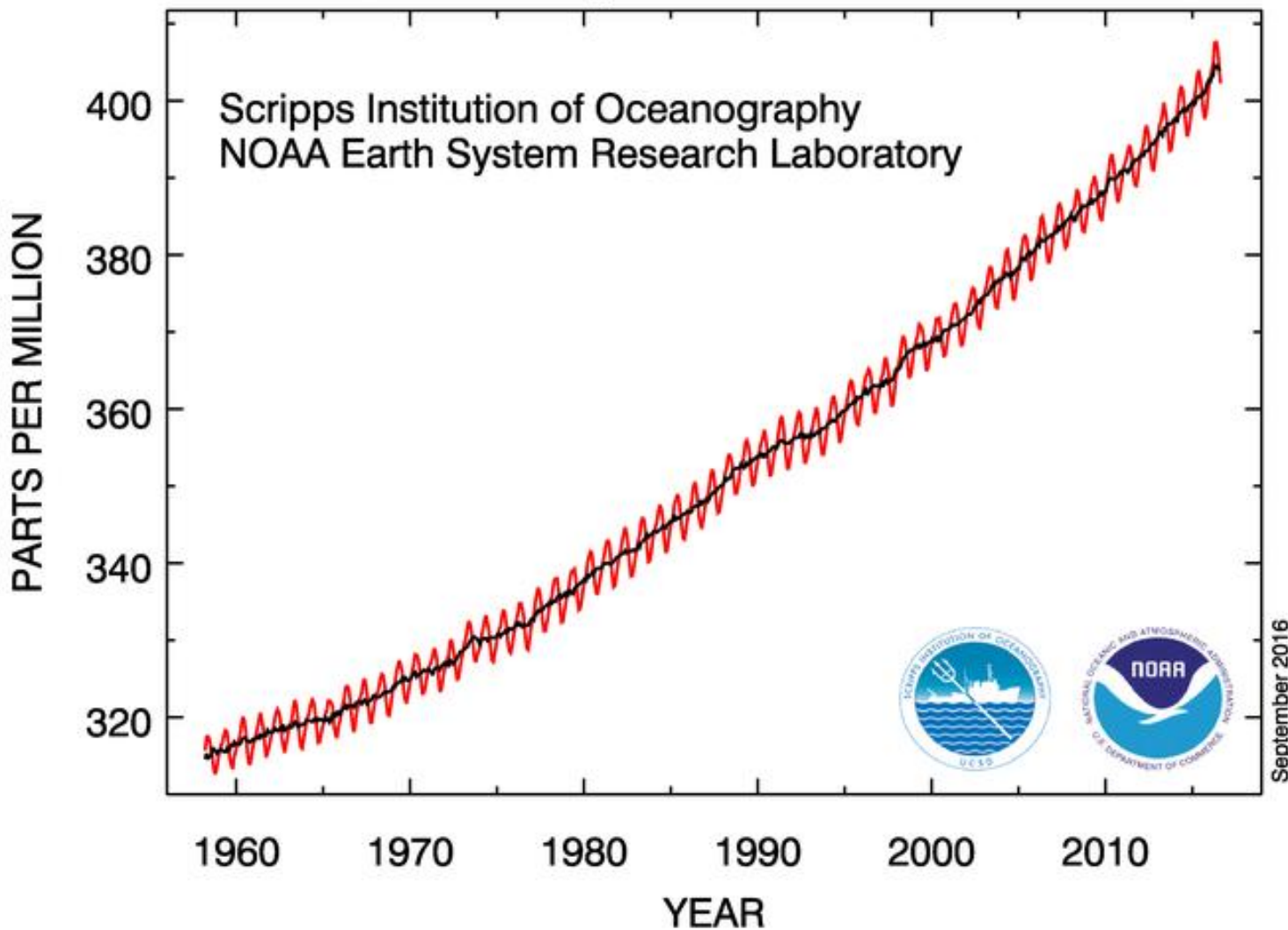


Al Gore

Mauna Loa Observatory

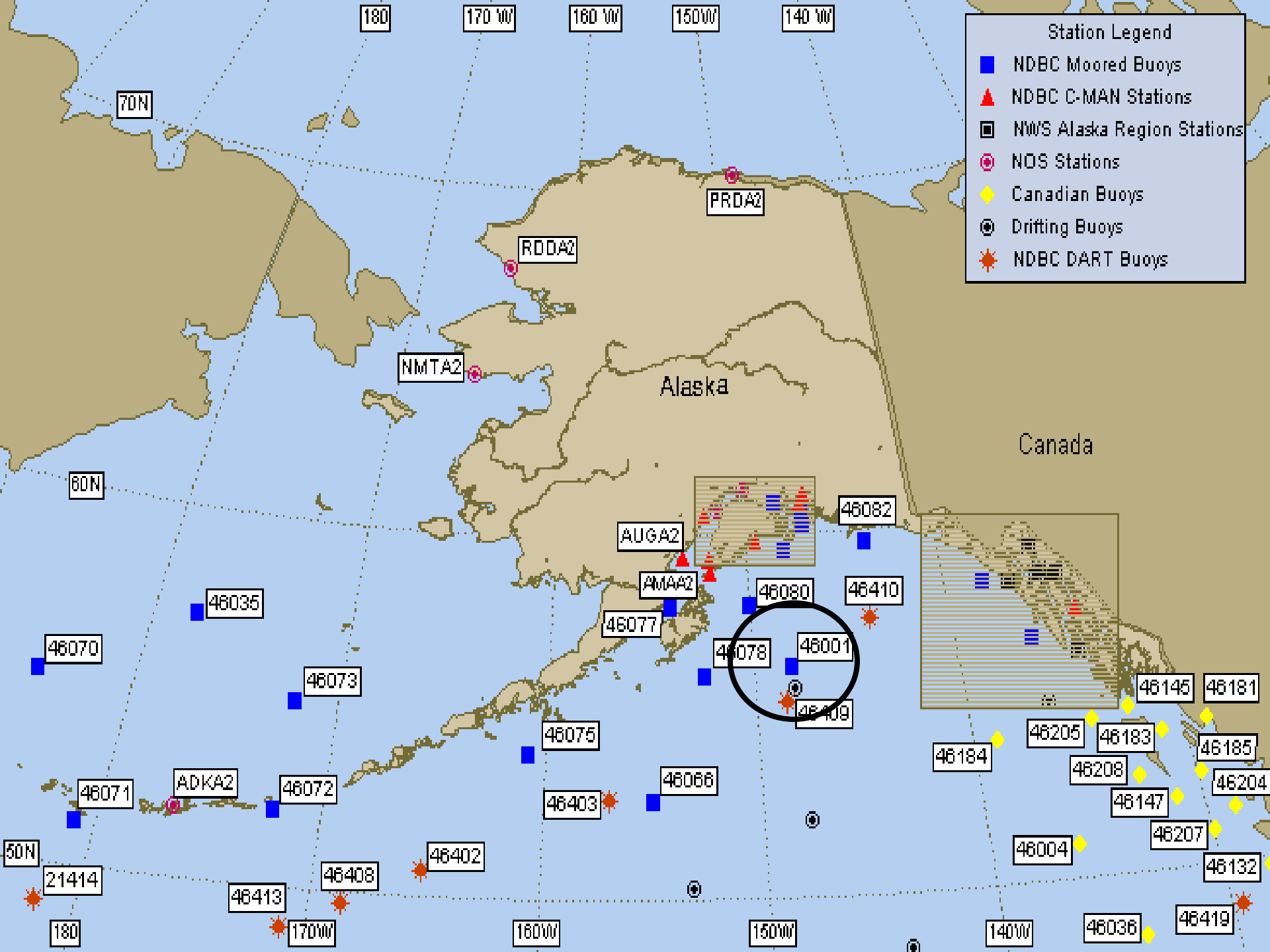


Atmospheric CO₂ at Mauna Loa Observatory

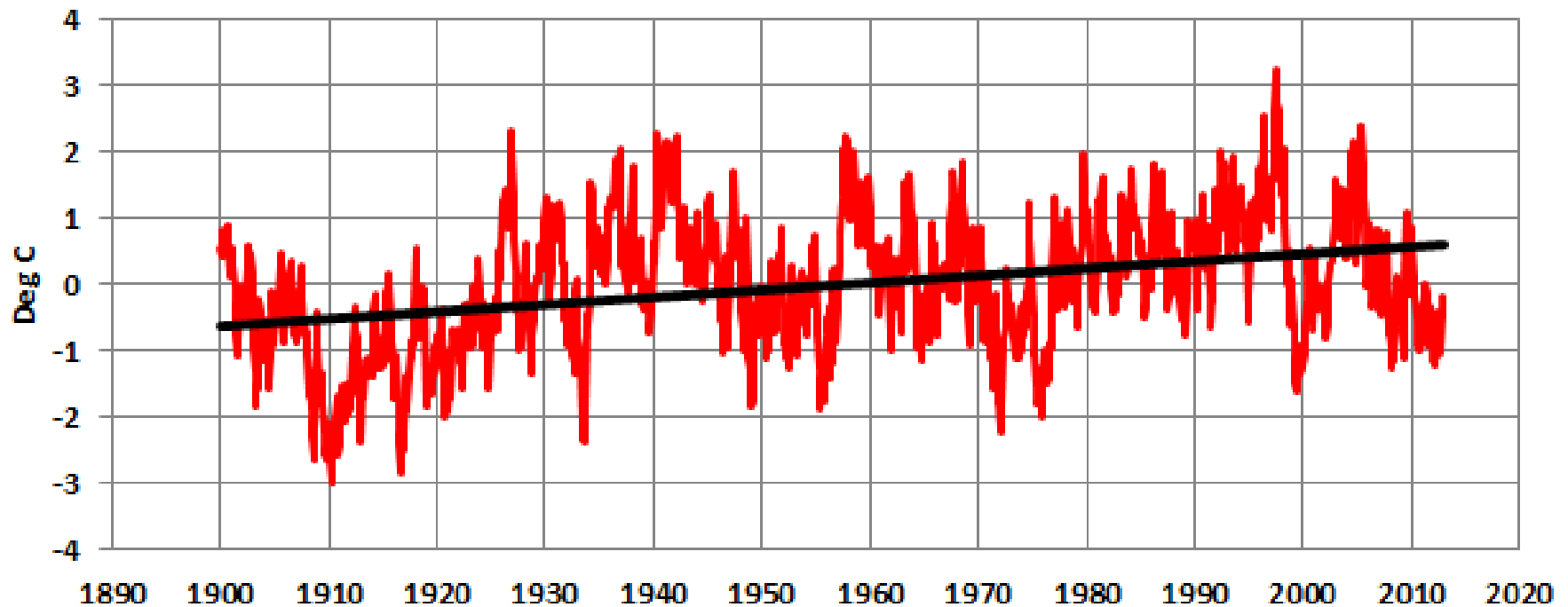




Buoy #46001—Gulf of Alaska



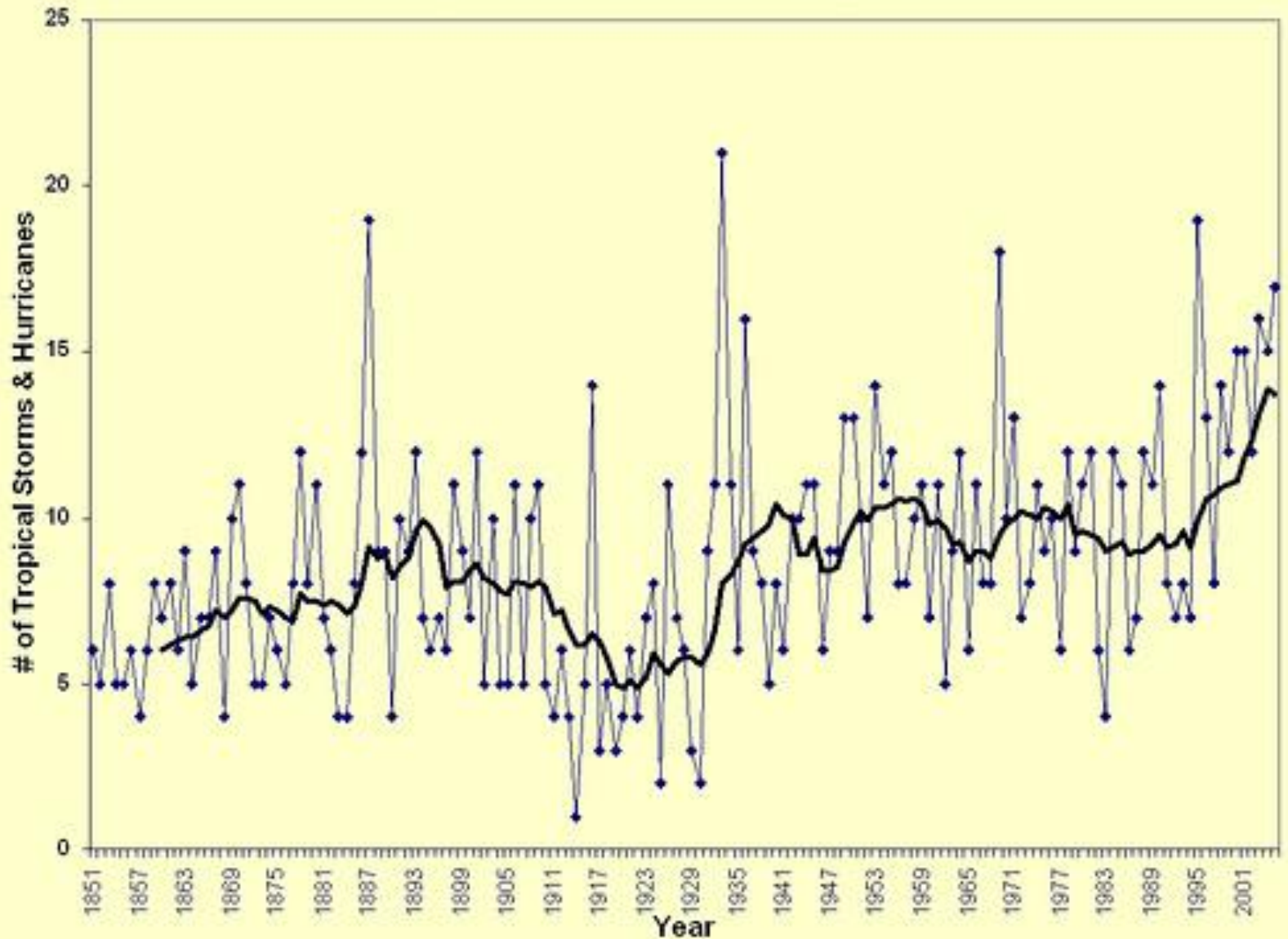
**Northeast Pacific Sea Surface Temperature Anomalies (SST1)
And Linear Trend
From Johnstone and Mantua (2014)
January 1900 to December 2012**

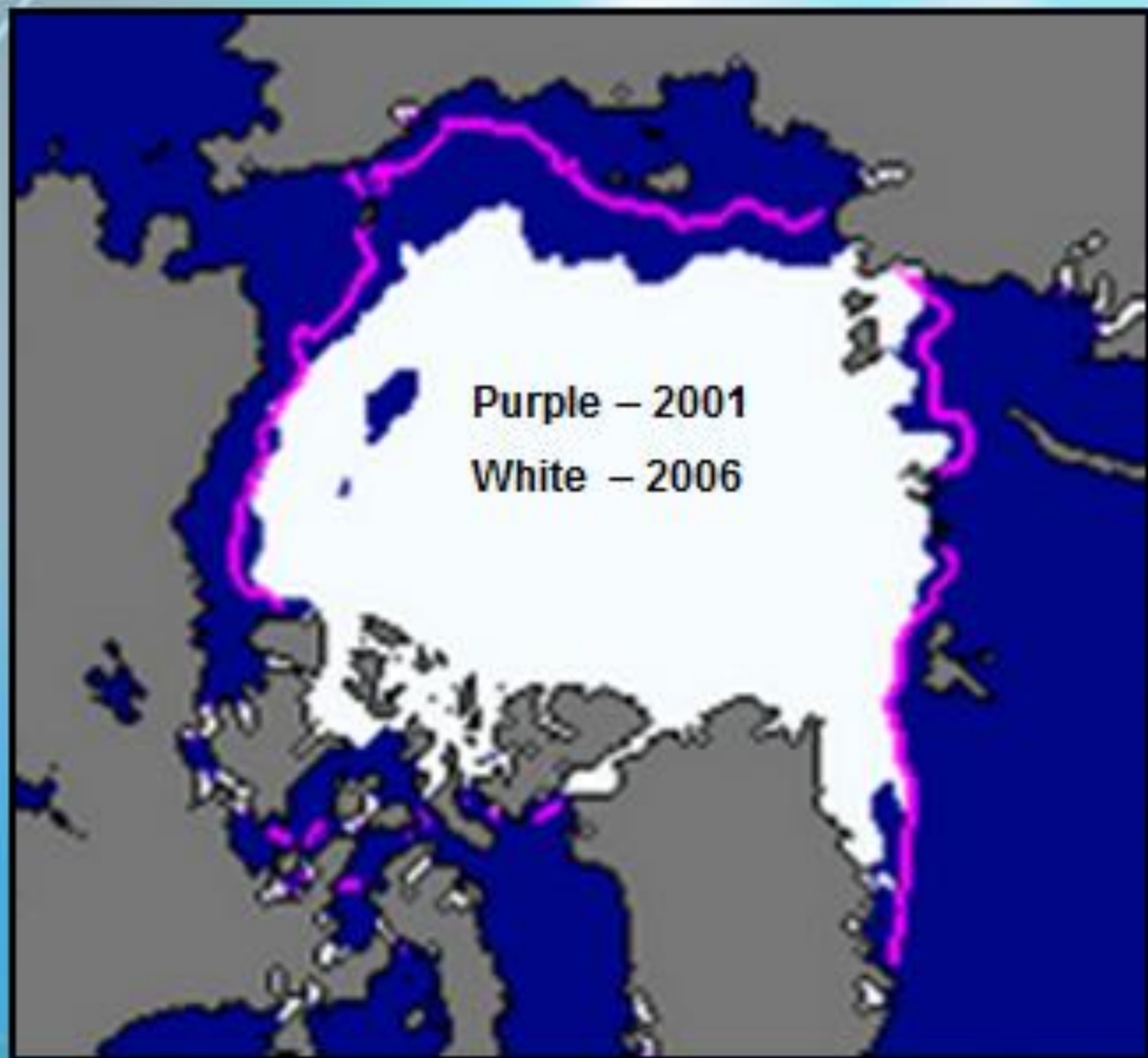




Hurricane Floyd—September, 1999

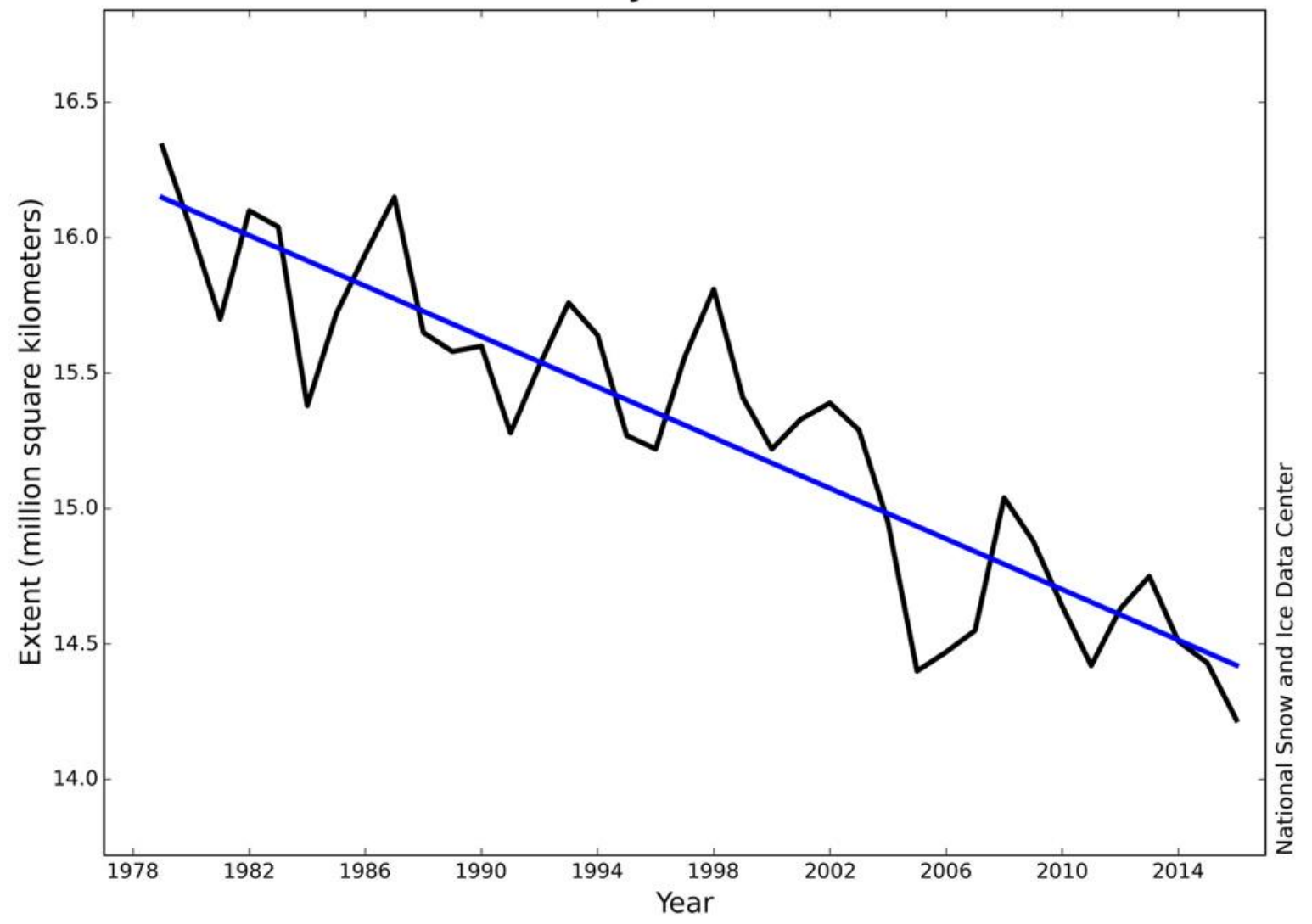
of Tropical Storms & Hurricanes by Year





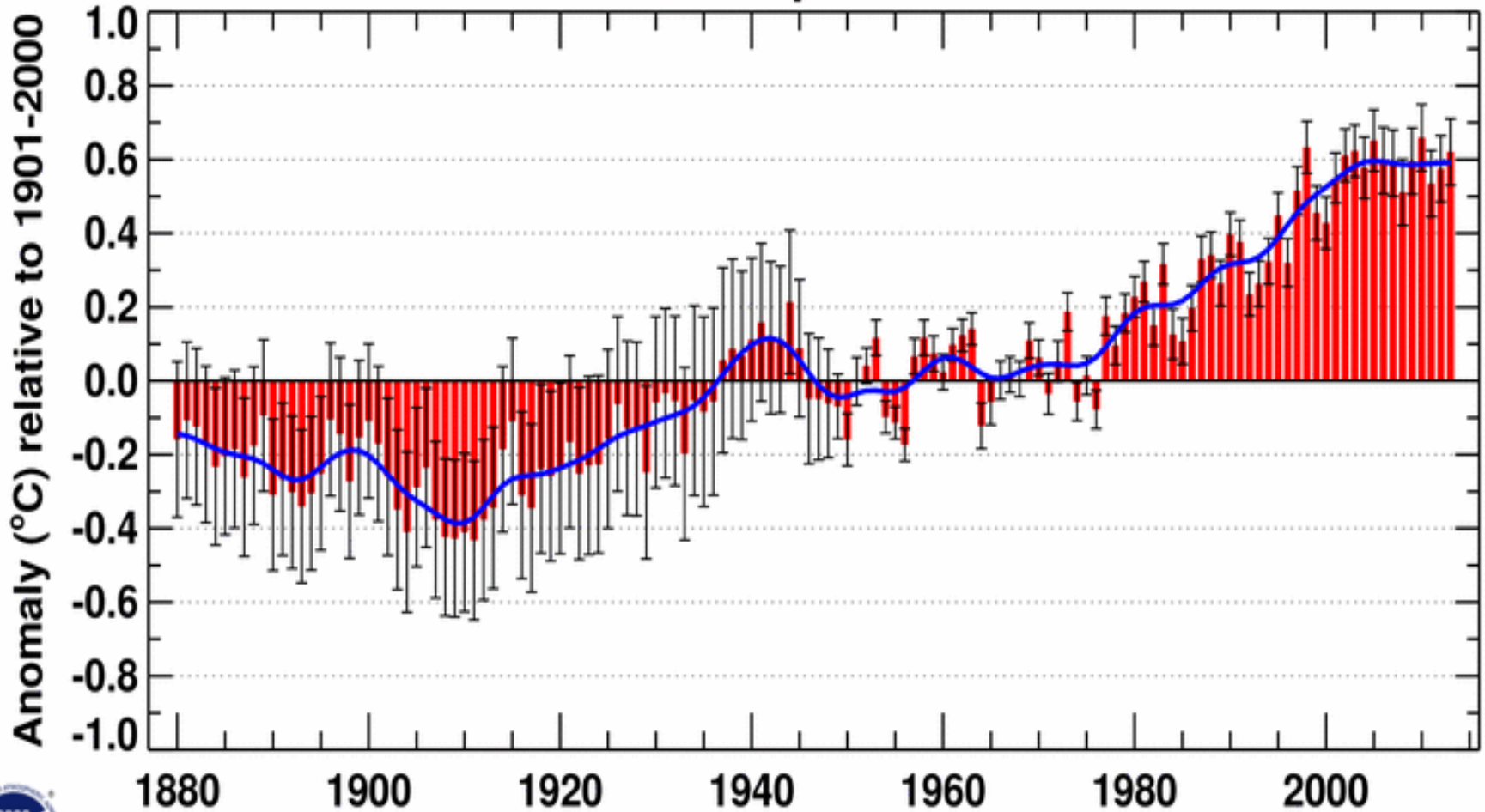
Arctic Sea Ice Extent—2001, 2006

Average Monthly Arctic Sea Ice Extent February 1979 - 2016



National Snow and Ice Data Center

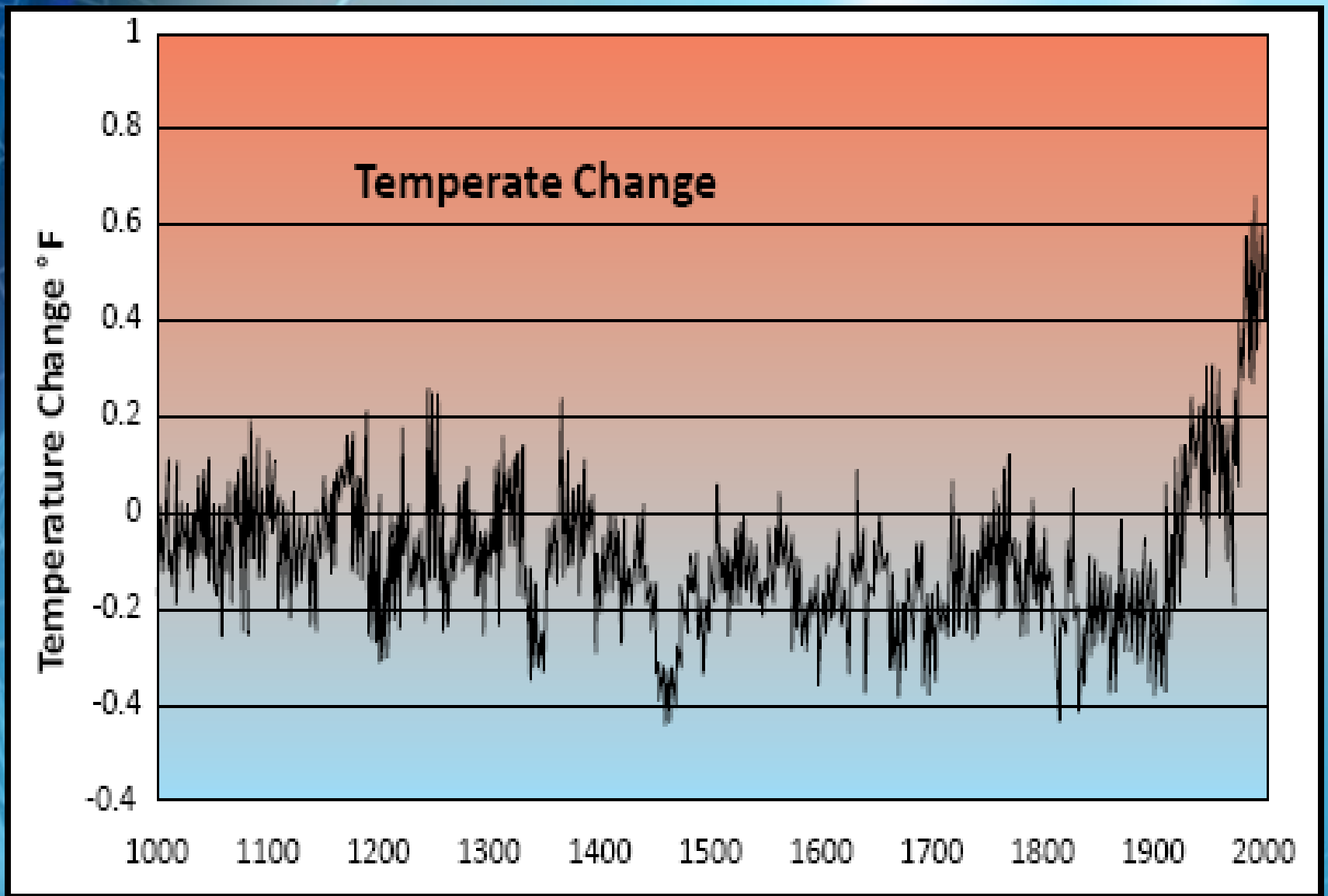
Jan-Dec Global Mean Temperature over Land & Ocean



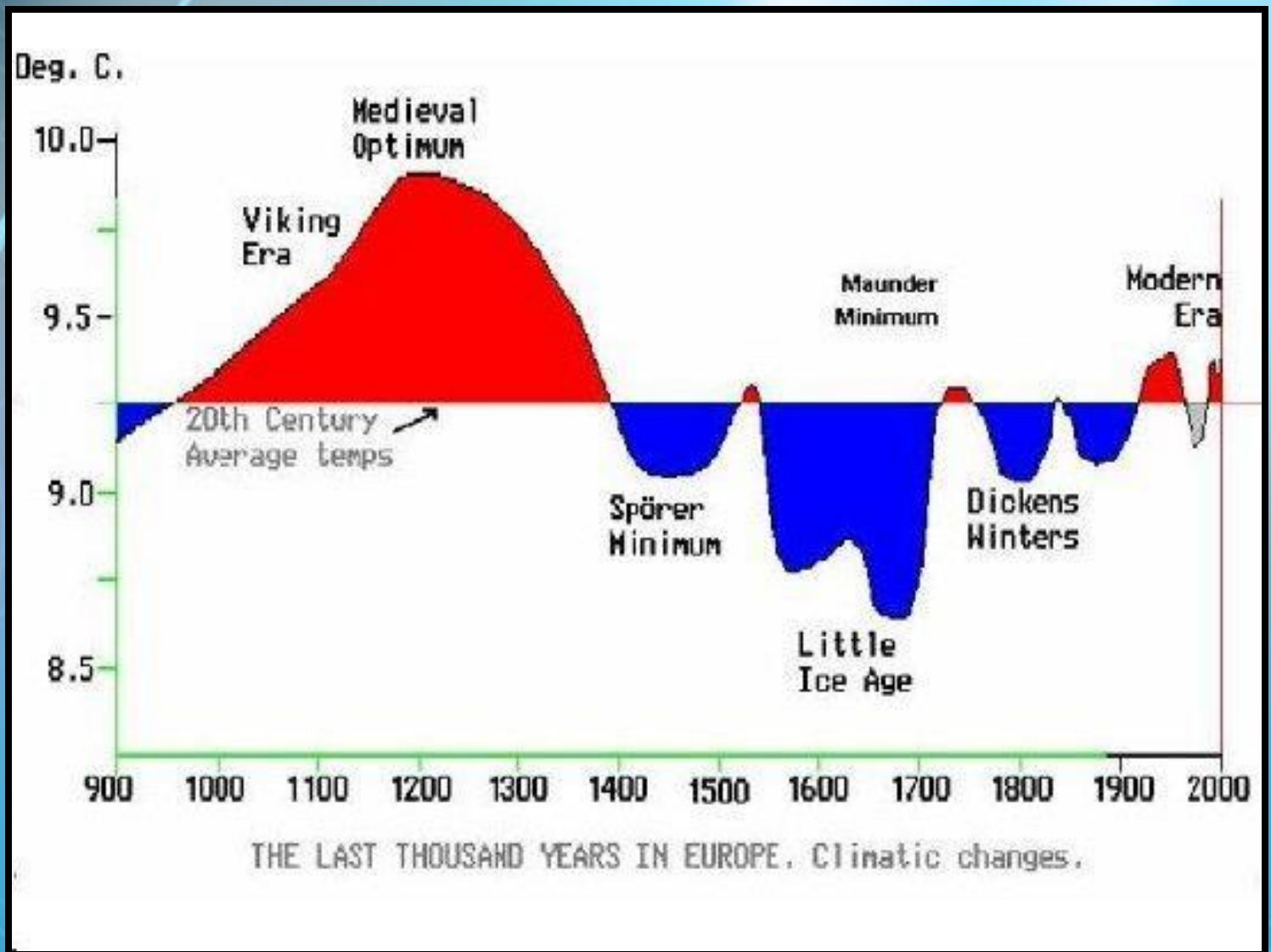
NCDC/NESDIS/NOAA



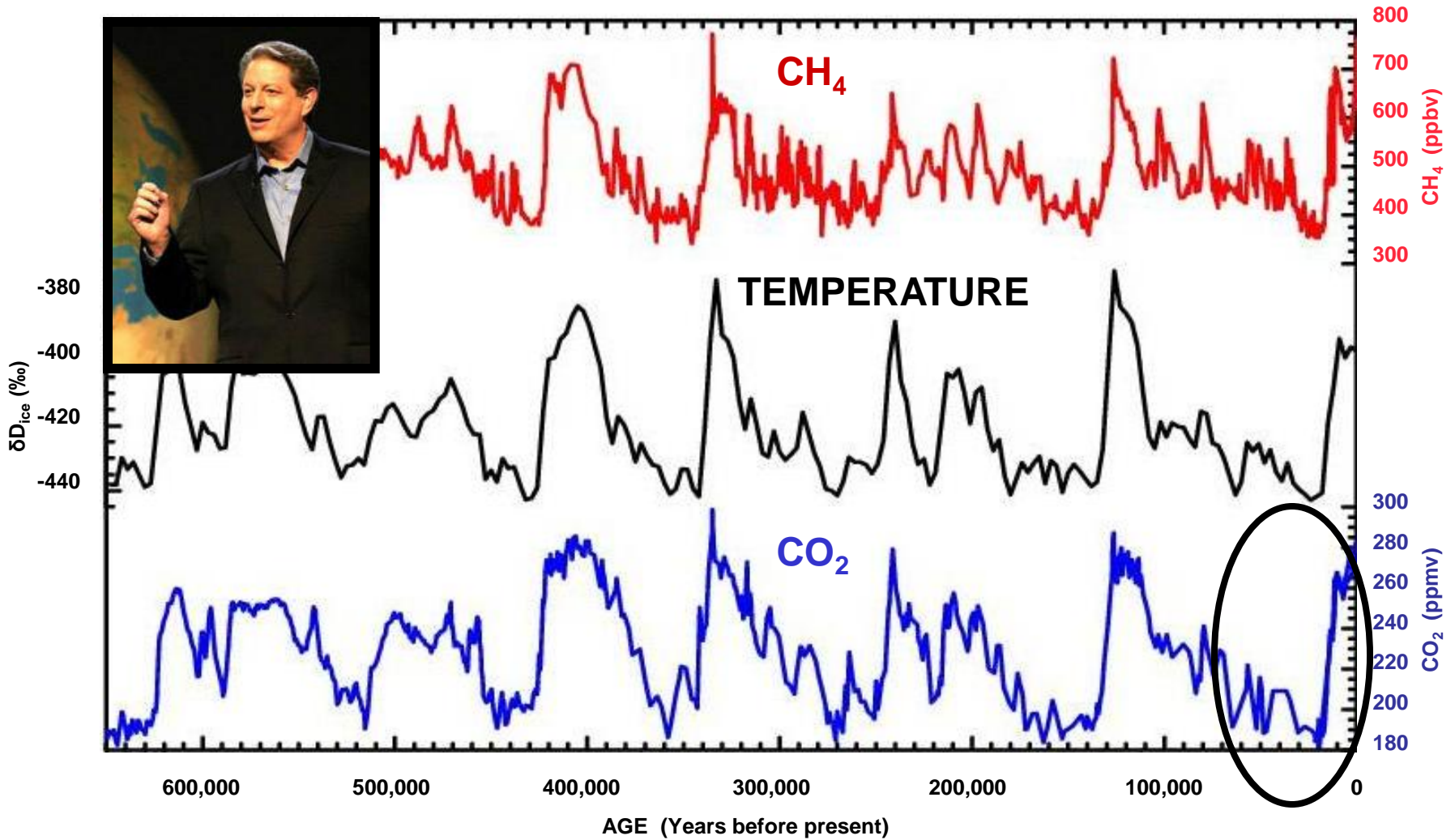
Marysville, California weather station



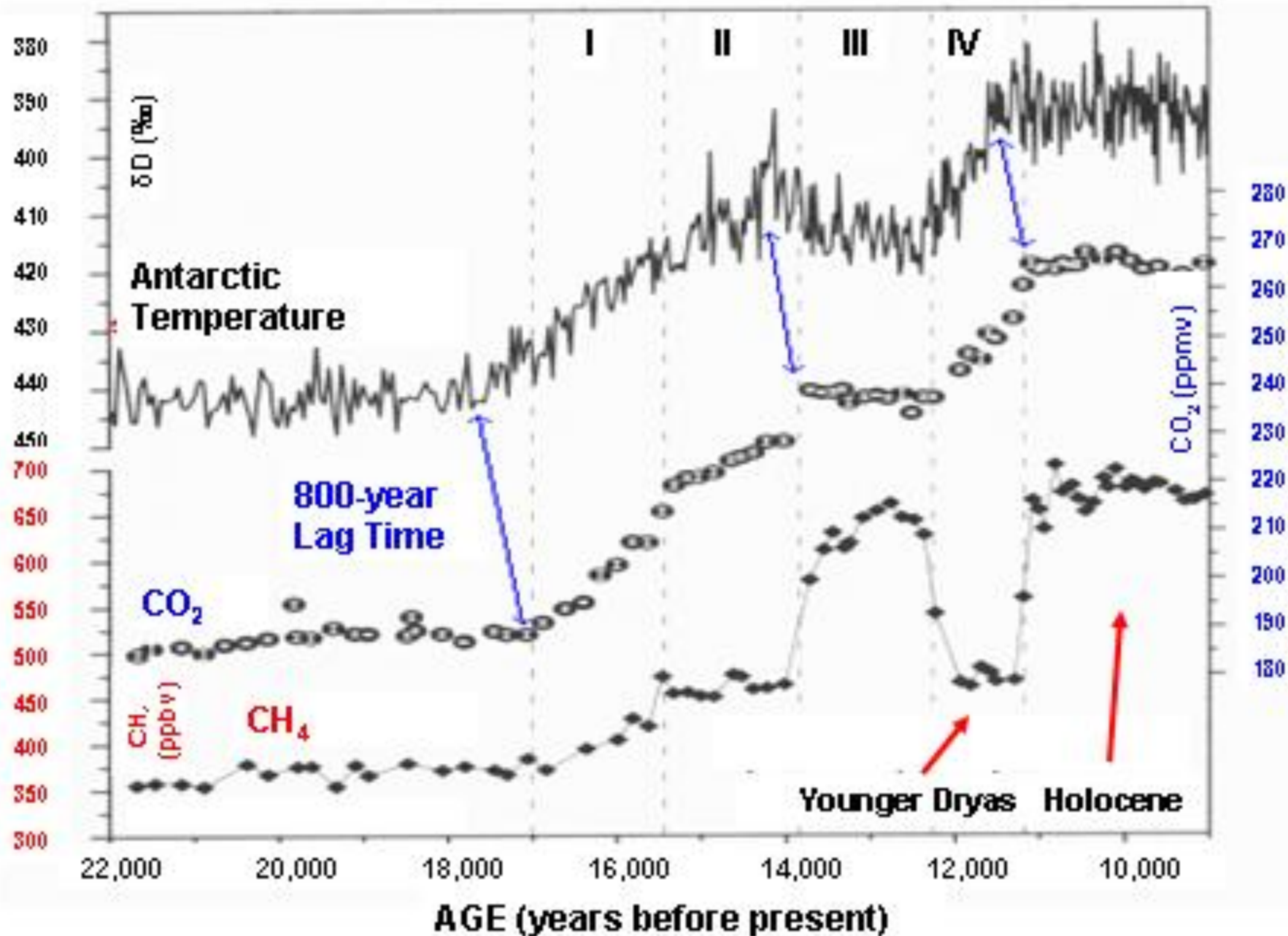
1,000 years of global temperature (Michael Mann's "Hockey Stick" graph).

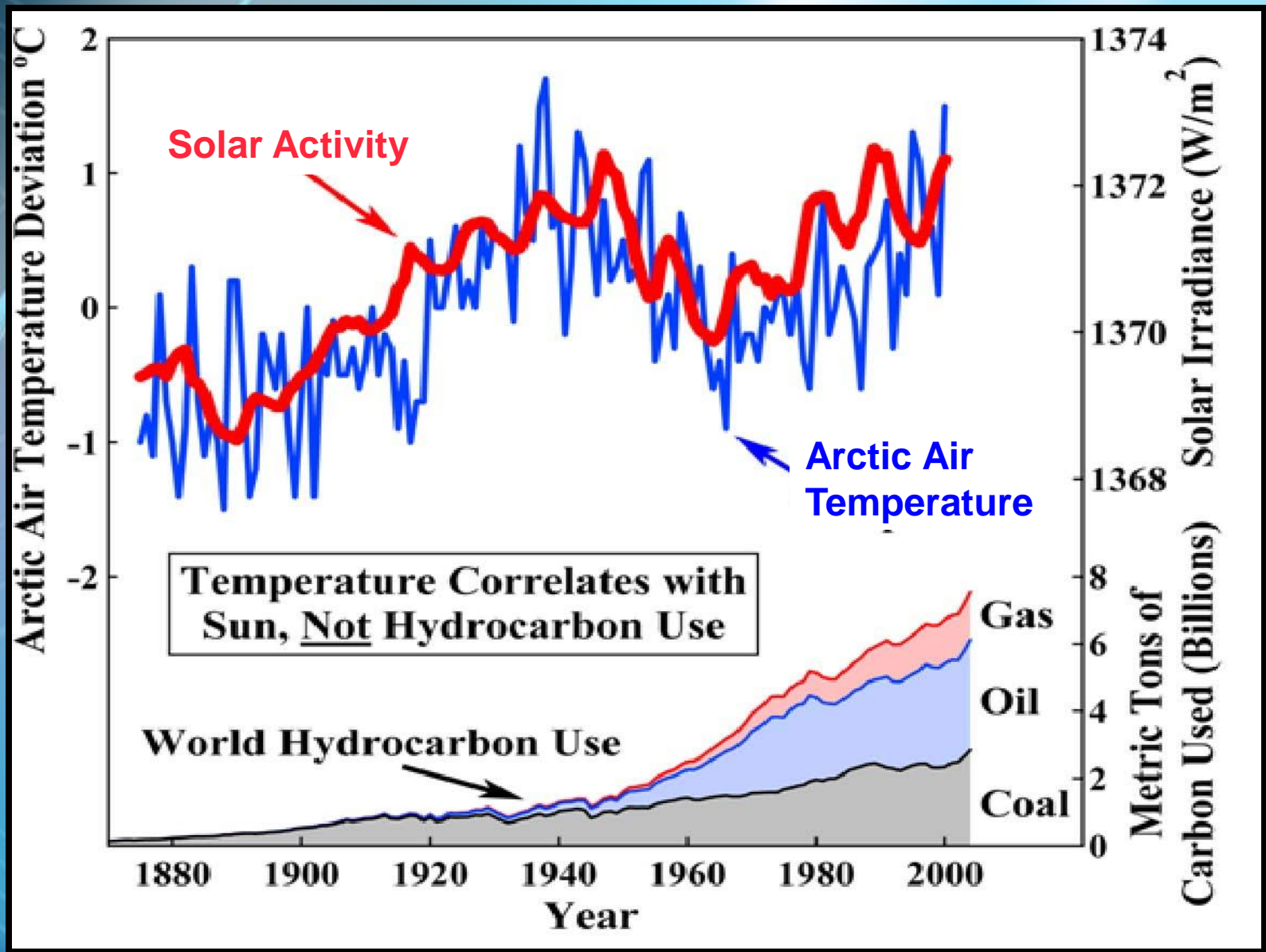


**1,000 years of European temperatures
(Traditional temperature graph)**



CH_4 , T, & CO_2 During Eight Hypothetical Ice Ages





30-year cooling in mid-century

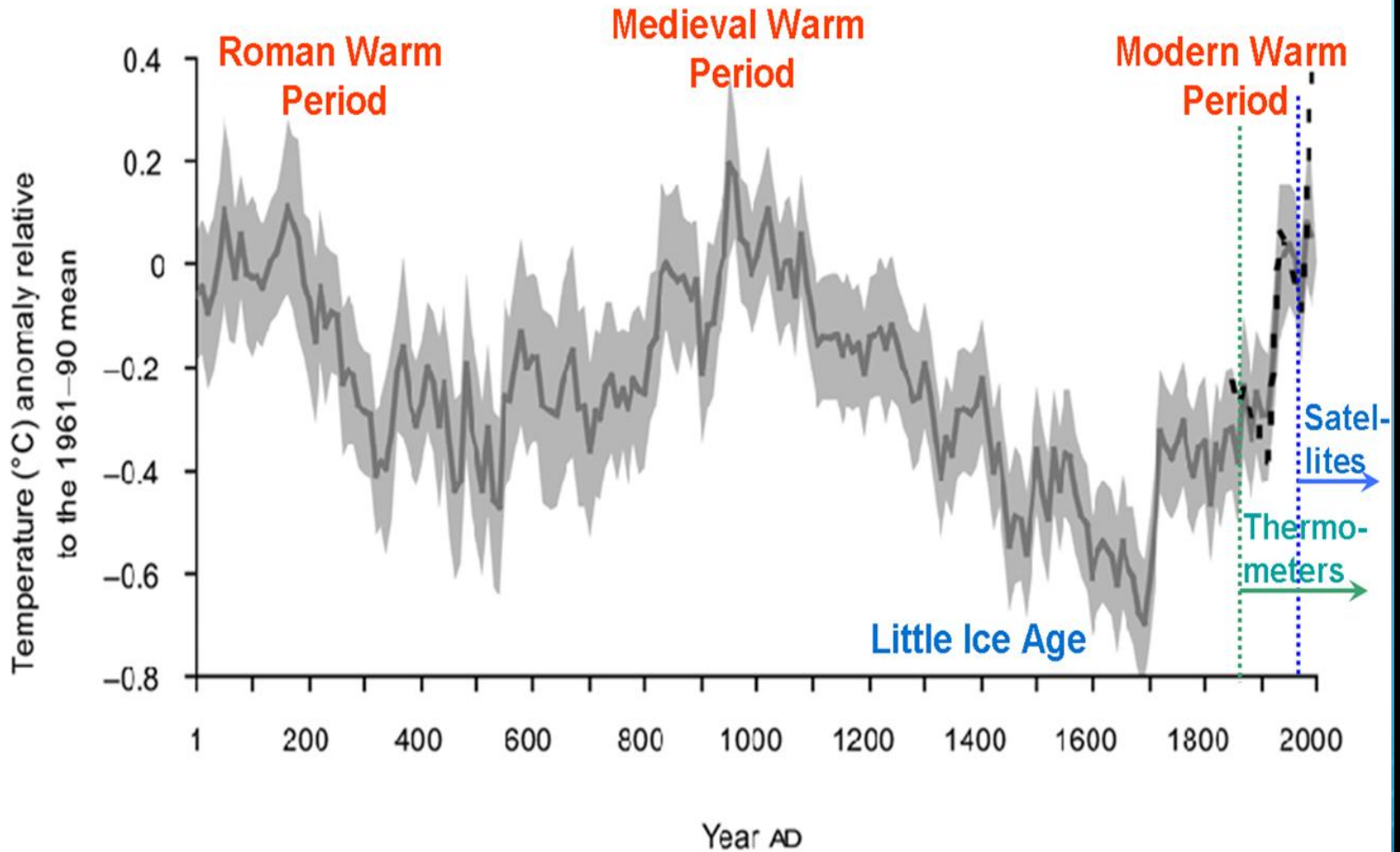


**John Christy, PhD
Climate Scientist at
the University of
Alabama and NASA at
Huntsville**

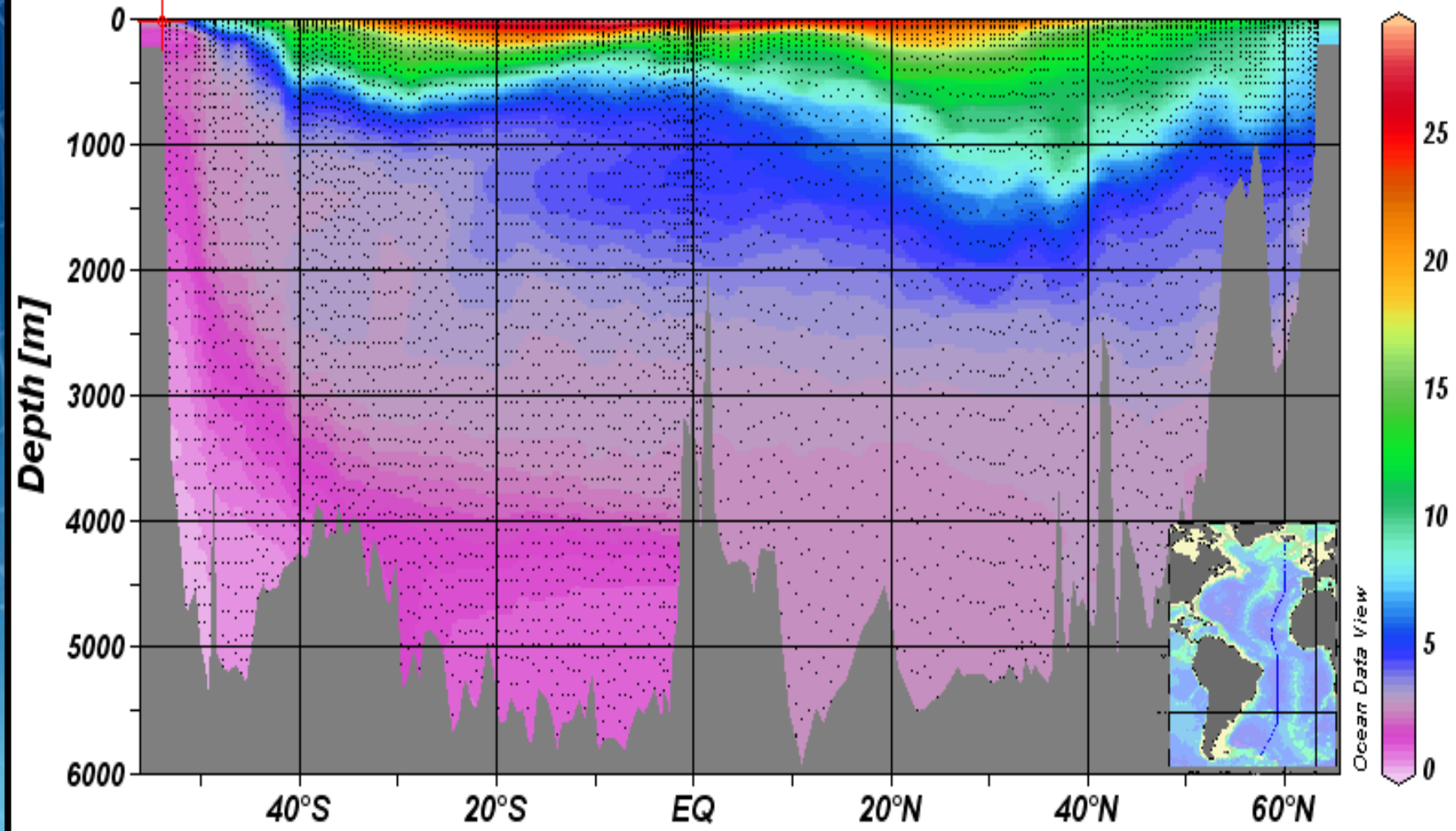


**Roy Spencer, PhD
Principal Research
Scientist and
climatologist at the
University of Alabama**

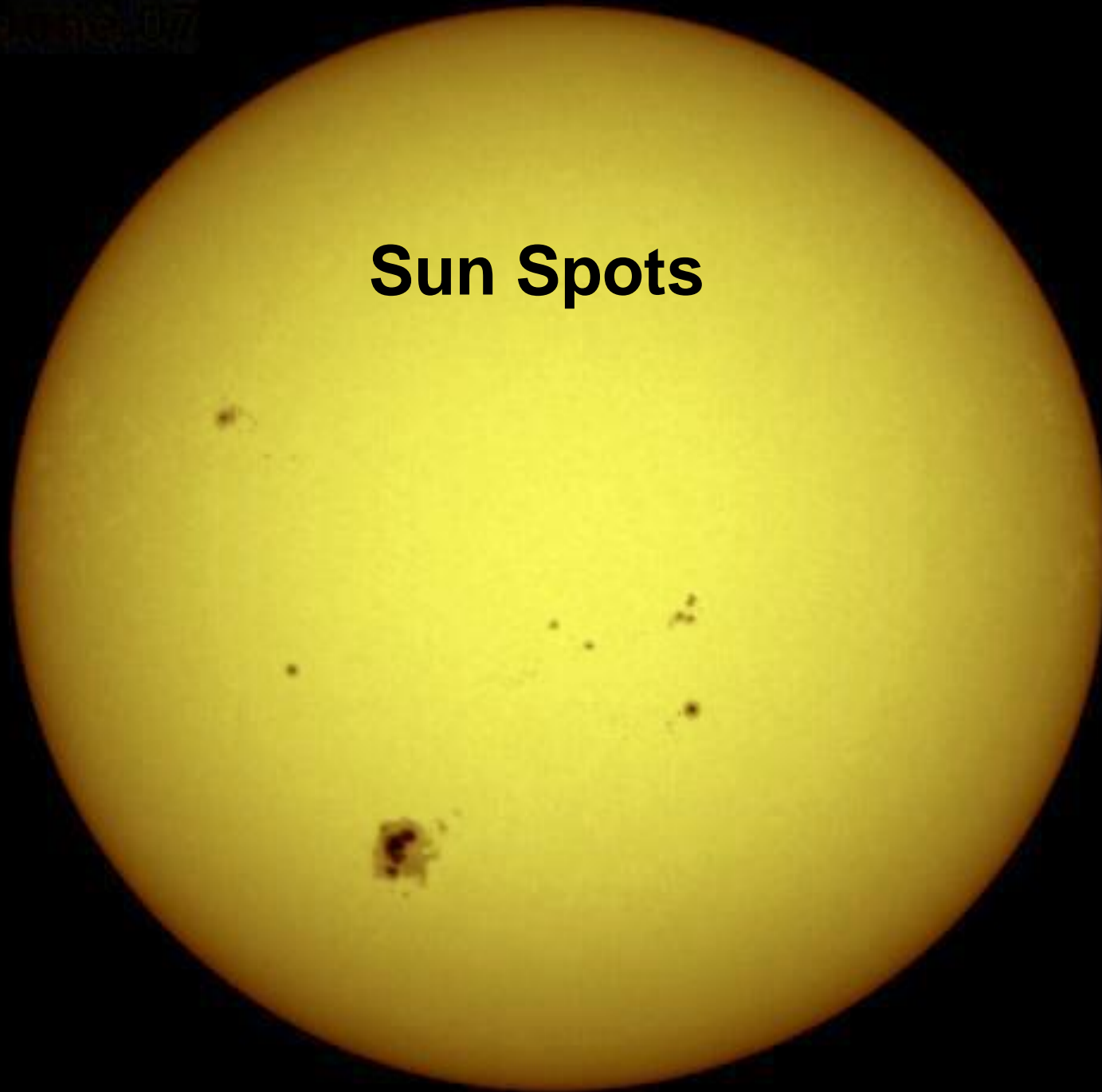
Temperature Reconstruction* for N. Hemisphere, 1 - 2000 AD Shows Modern Warm Period Not Exceptional

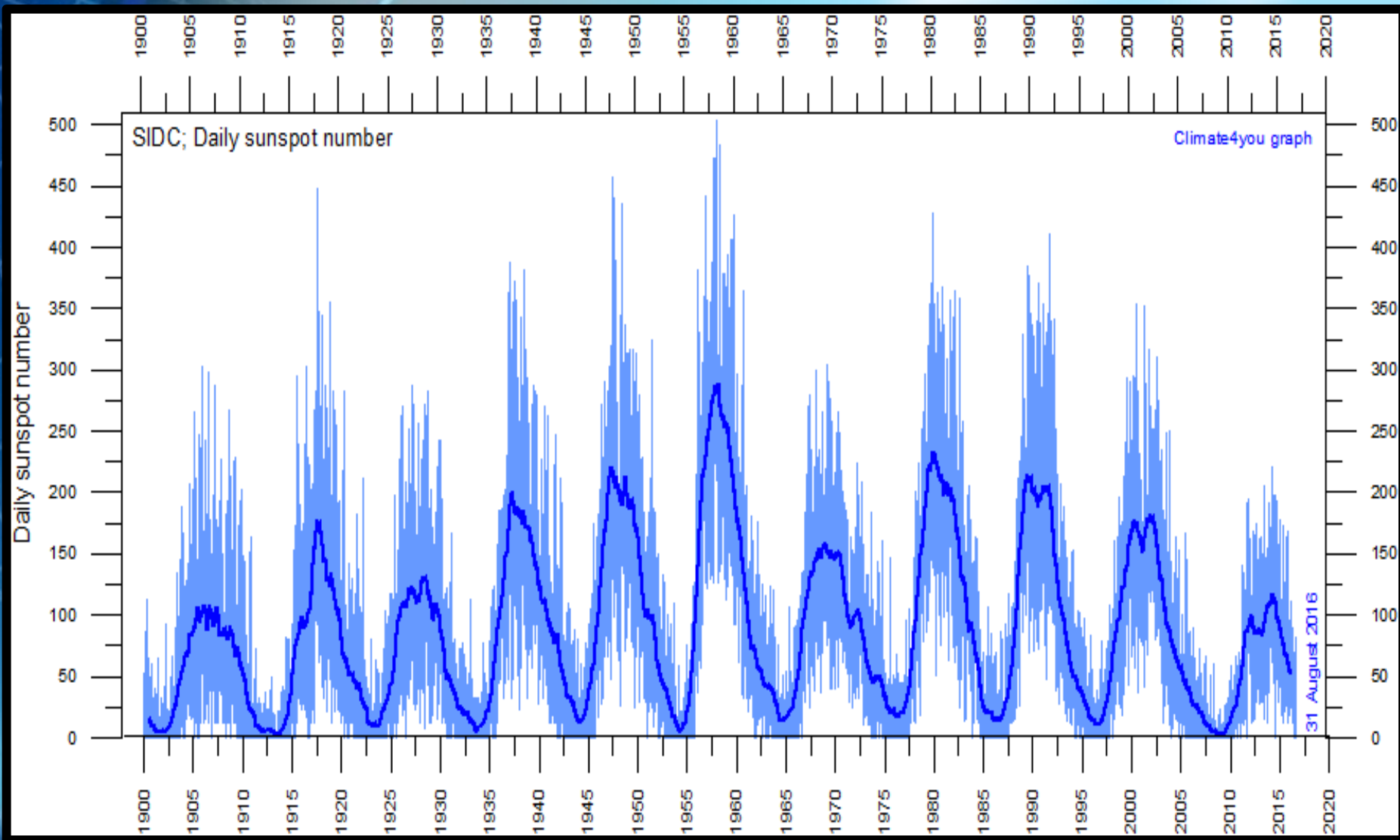


Temperature [°C]

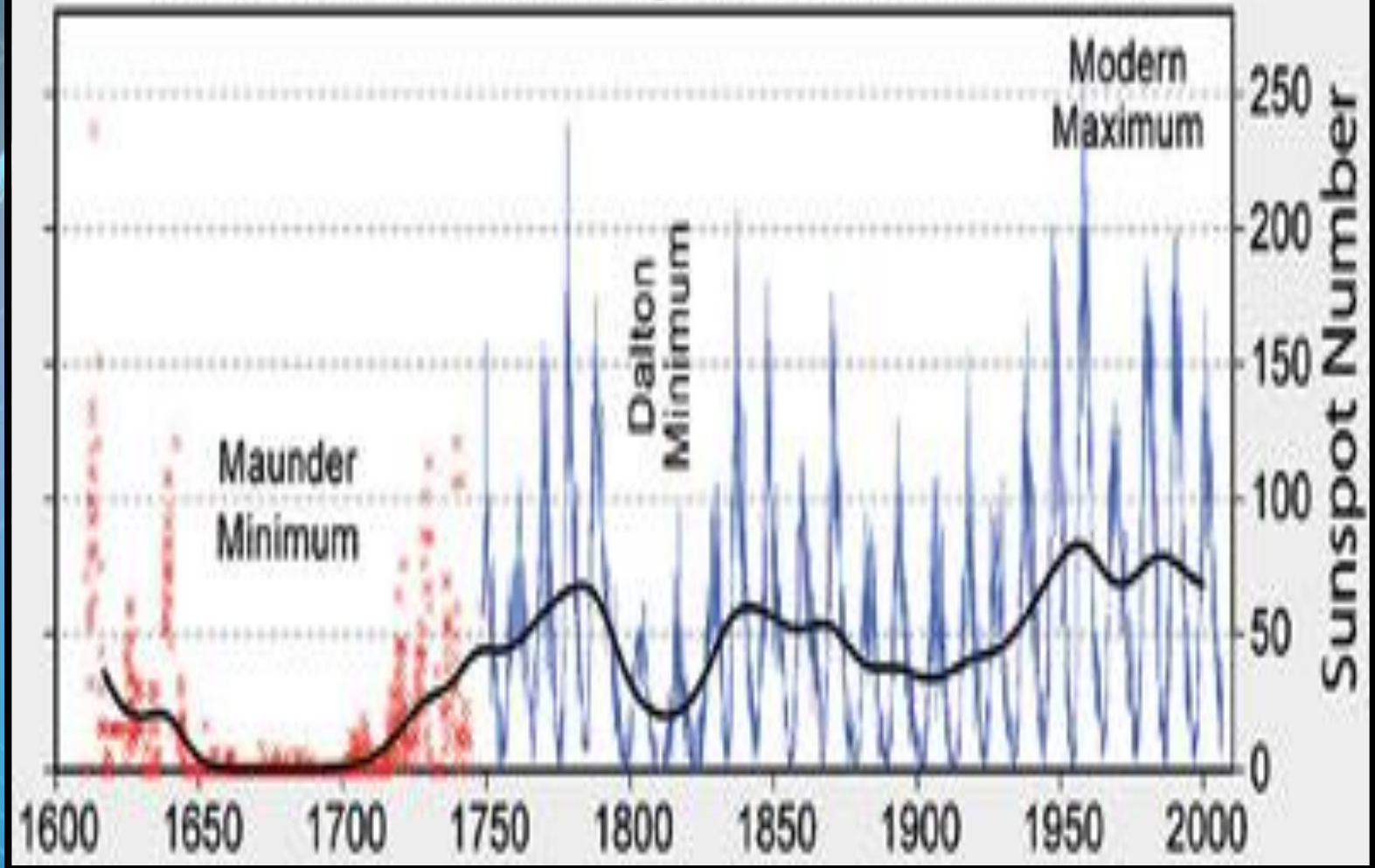


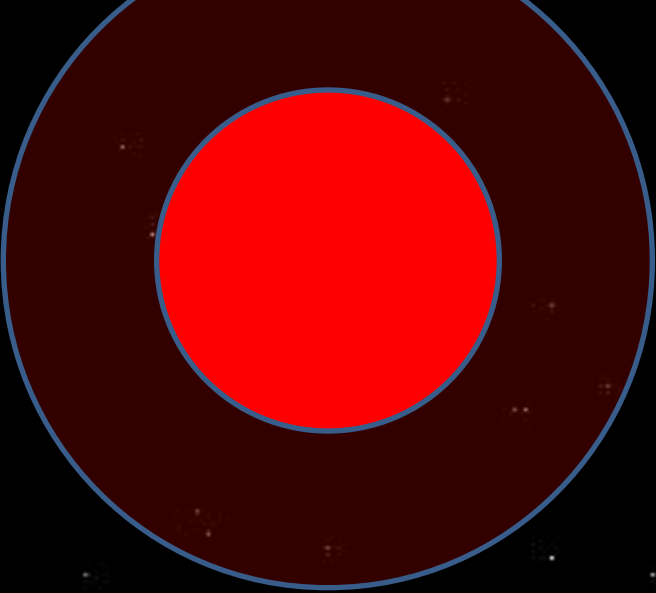
Sun Spots





400 Years of Sunspot Observations



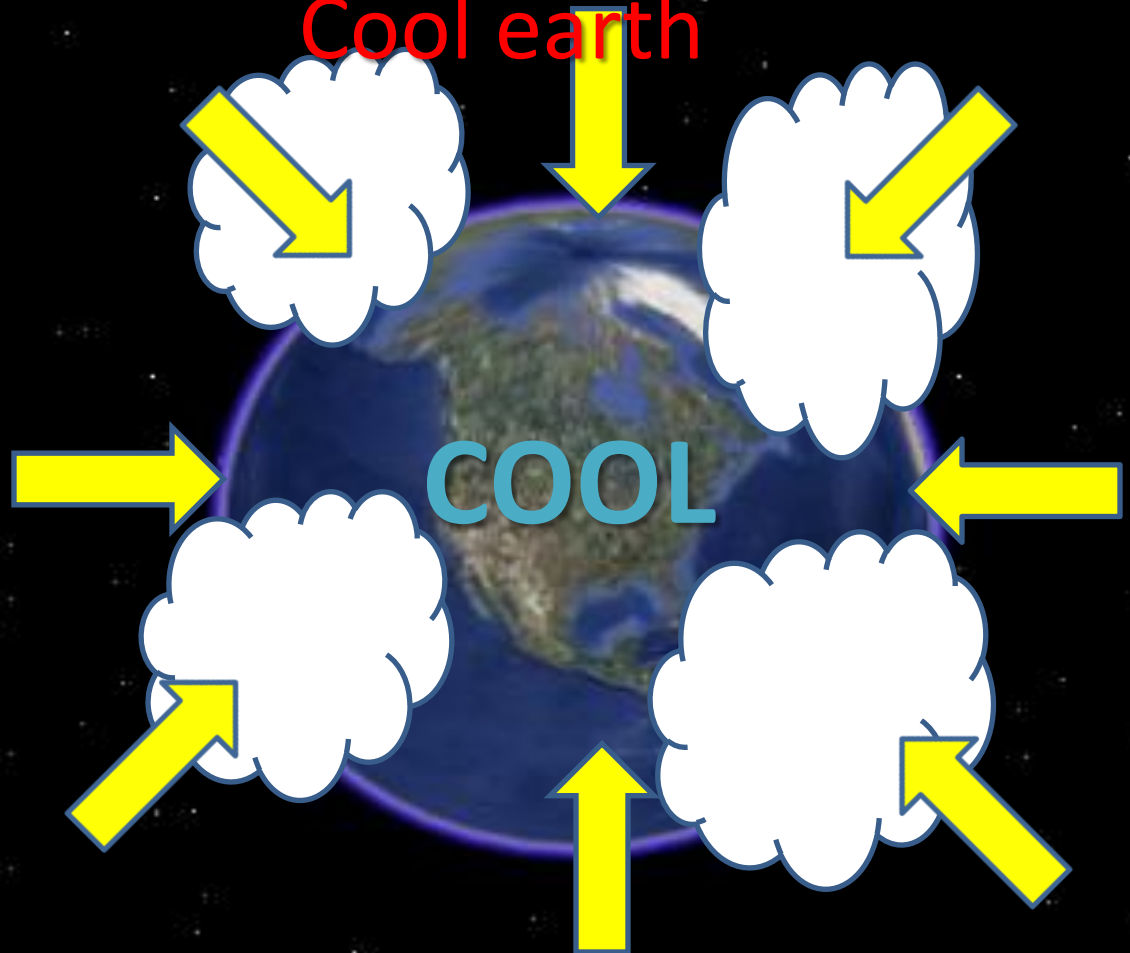


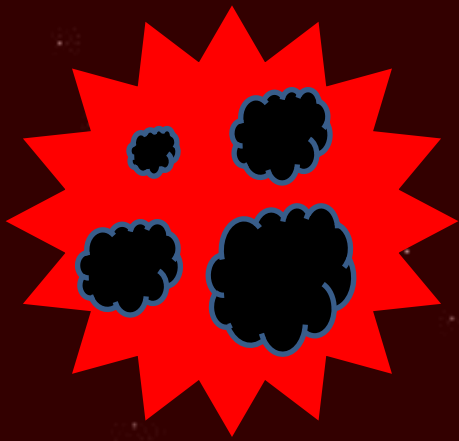
INACTIVE SUN

High cosmic rays

More clouds

Cool earth



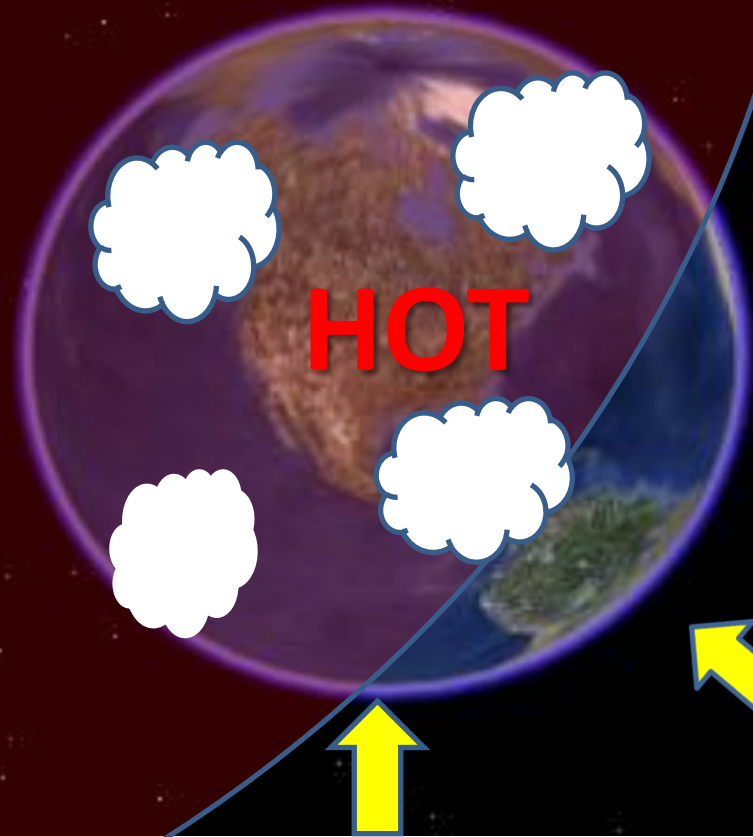


ACTIVE SUN

Low cosmic rays

Fewer clouds

Hot earth





The Climate Surprise

- **Carbon Dioxide is not a pollutant !!**
- **Plants grow faster and use less water under higher concentrations of atmospheric CO₂**
- **Phytoplankton grows better under slightly more acidic oceans with more CO₂**
- **It would likely be less expensive to accomodate to a slightly warmer climate than to reverse global warming**
- **Decreasing global warming by cutting CO₂ emissions would harm developing nations**

Conclusions

- Global warming has been occurring for over 150 years, even before industrialization.
- It's probably due mostly to natural causes.
- Humans may contribute a small part, but the main cause of global warming is still not understood.
- One theory shows great promise: Increased solar activity modulates galactic cosmic radiation, decreases low-level cloud cover, and warms the atmosphere.
- Global warming may be beneficial.

A Guide to Understanding Global Temperature Data

by Roy W. Spencer, Ph.D.



July 2016



The Climate Surprise

Why CO₂ is good for the Earth

- Roger Kimball
- William Happer
- Craig Idso
- Roy Spencer
- Richard Lindzen
- Patrick Moore
- Bruce Everett

The New Criterion

CO₂ COALITION





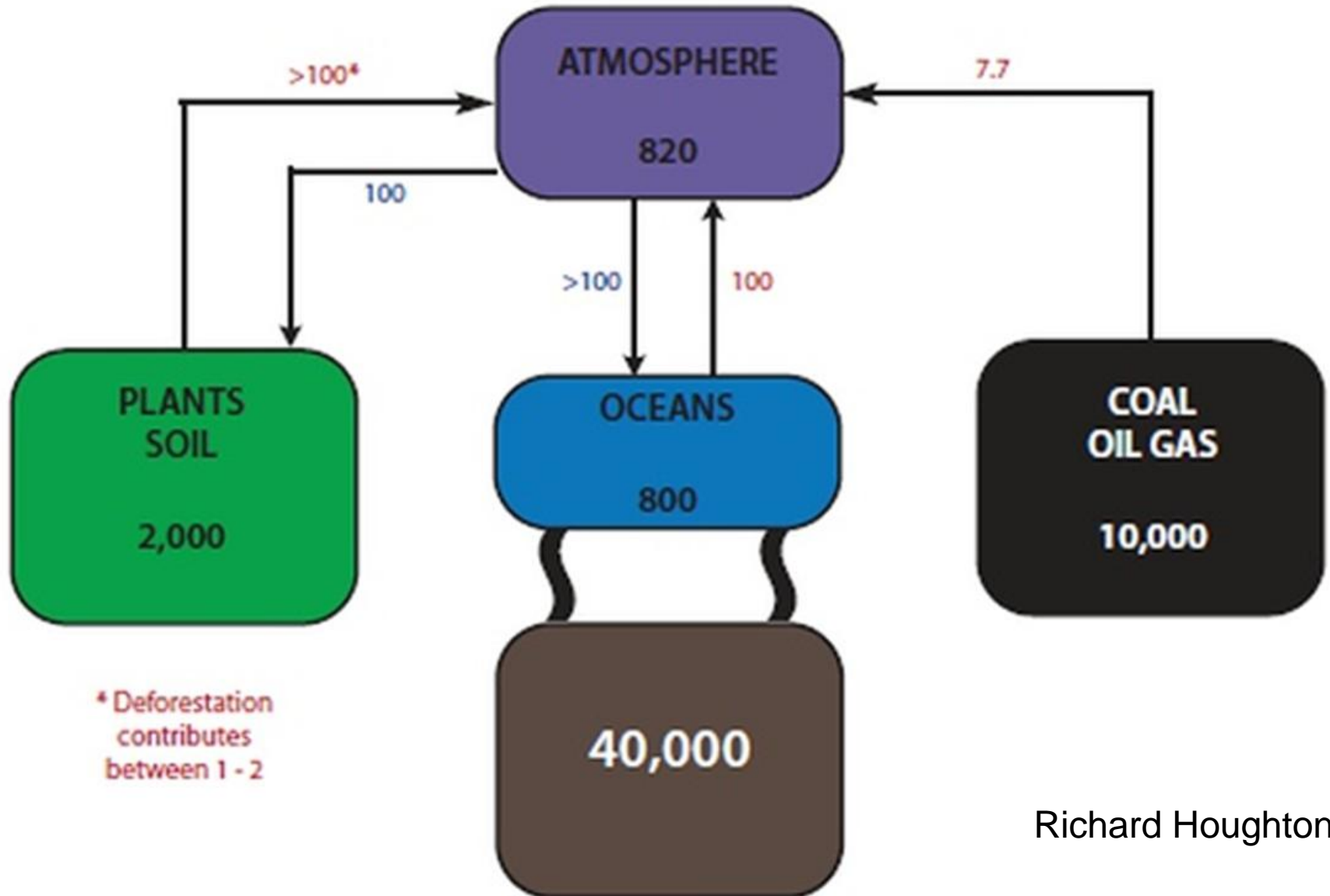
INSTITUTE
for CREATION
RESEARCH

An Alternative View to Temperature Increase from CO₂ in the Atmosphere

Bryce Johnson

Global Flows of Carbon

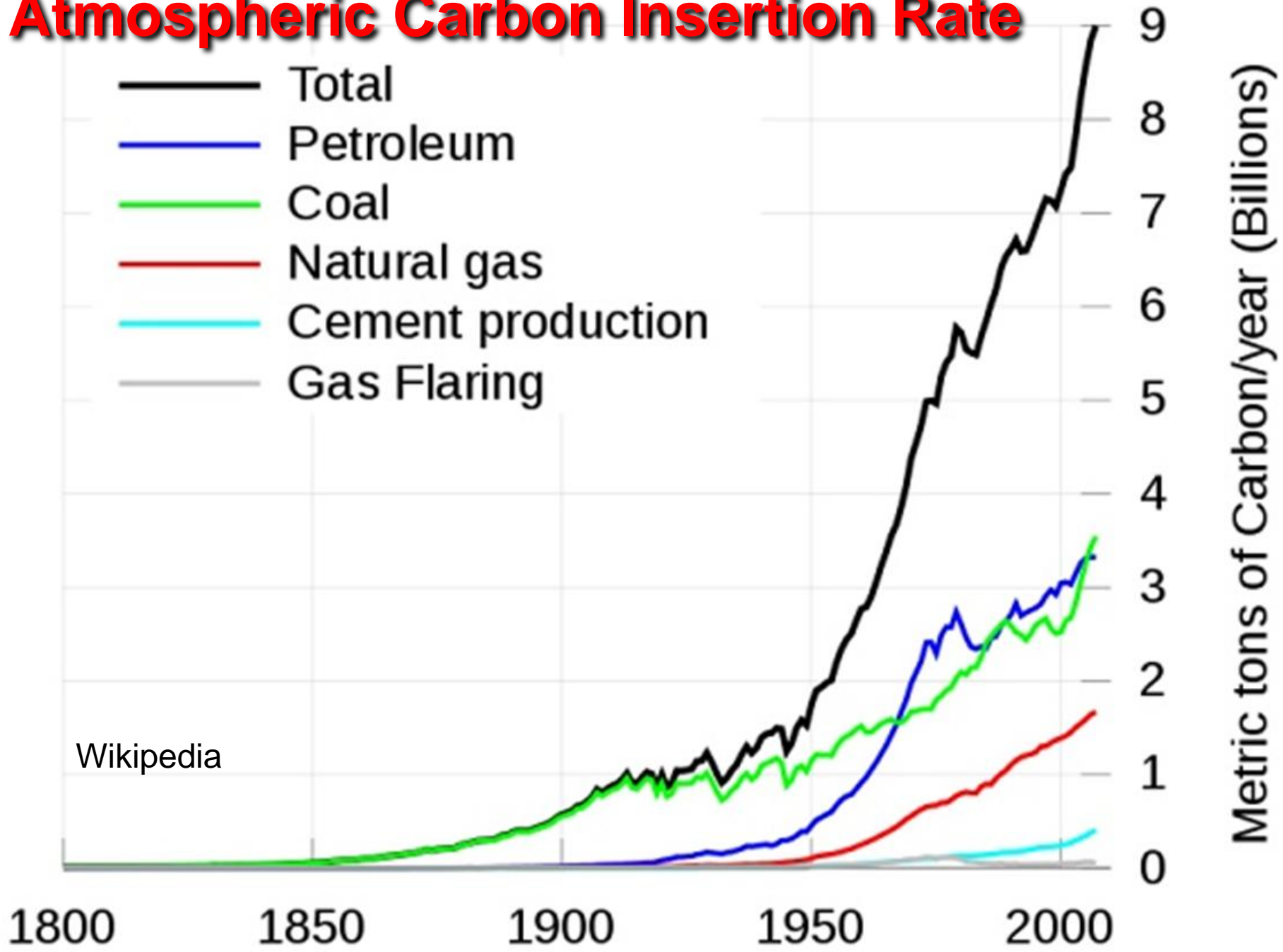
(Petagrams of Carbon/Year)



Richard Houghton

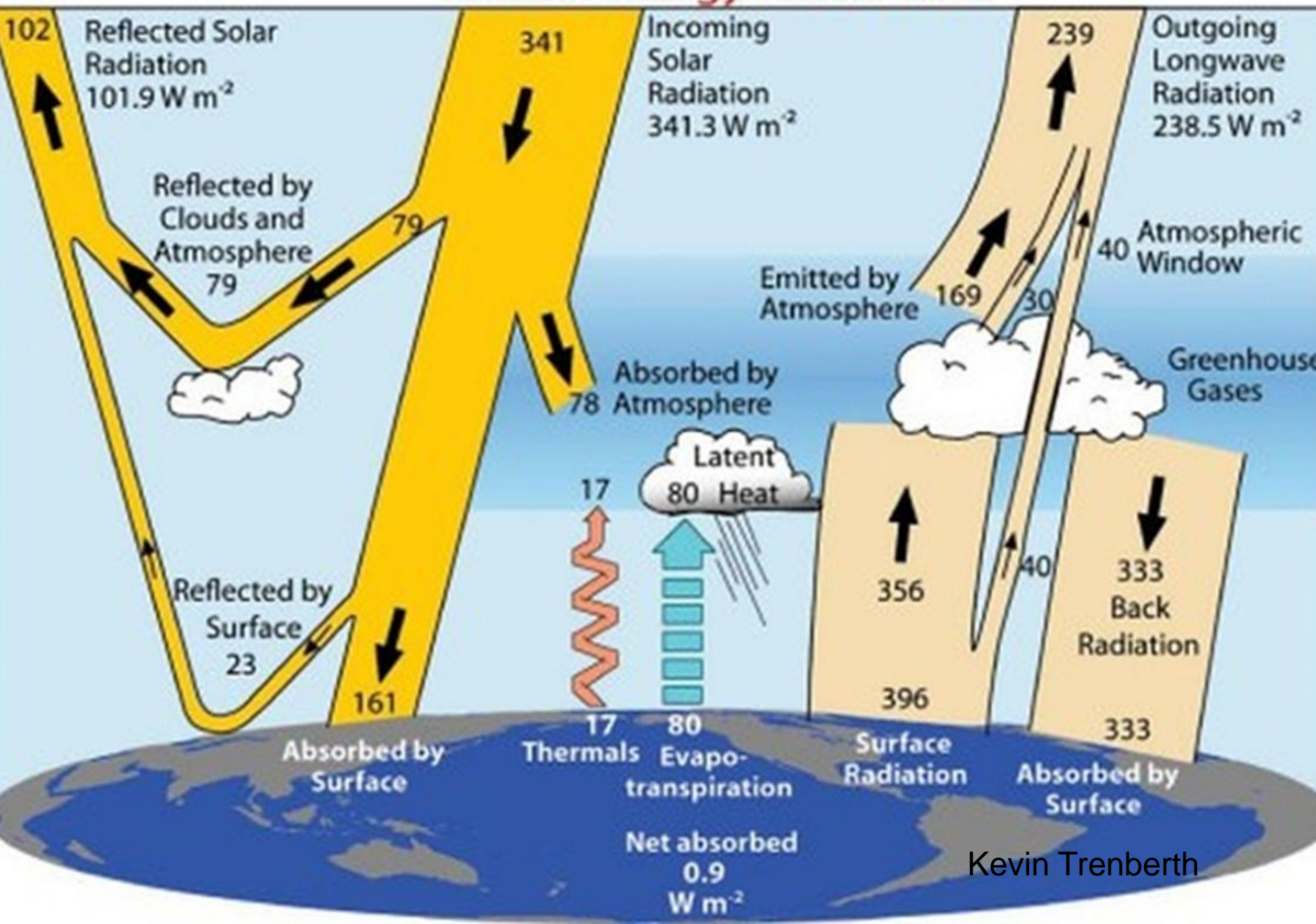
Atmospheric Carbon Insertion Rate

- Total
- Petroleum
- Coal
- Natural gas
- Cement production
- Gas Flaring



Wikipedia

Global Energy Flows $W m^{-2}$



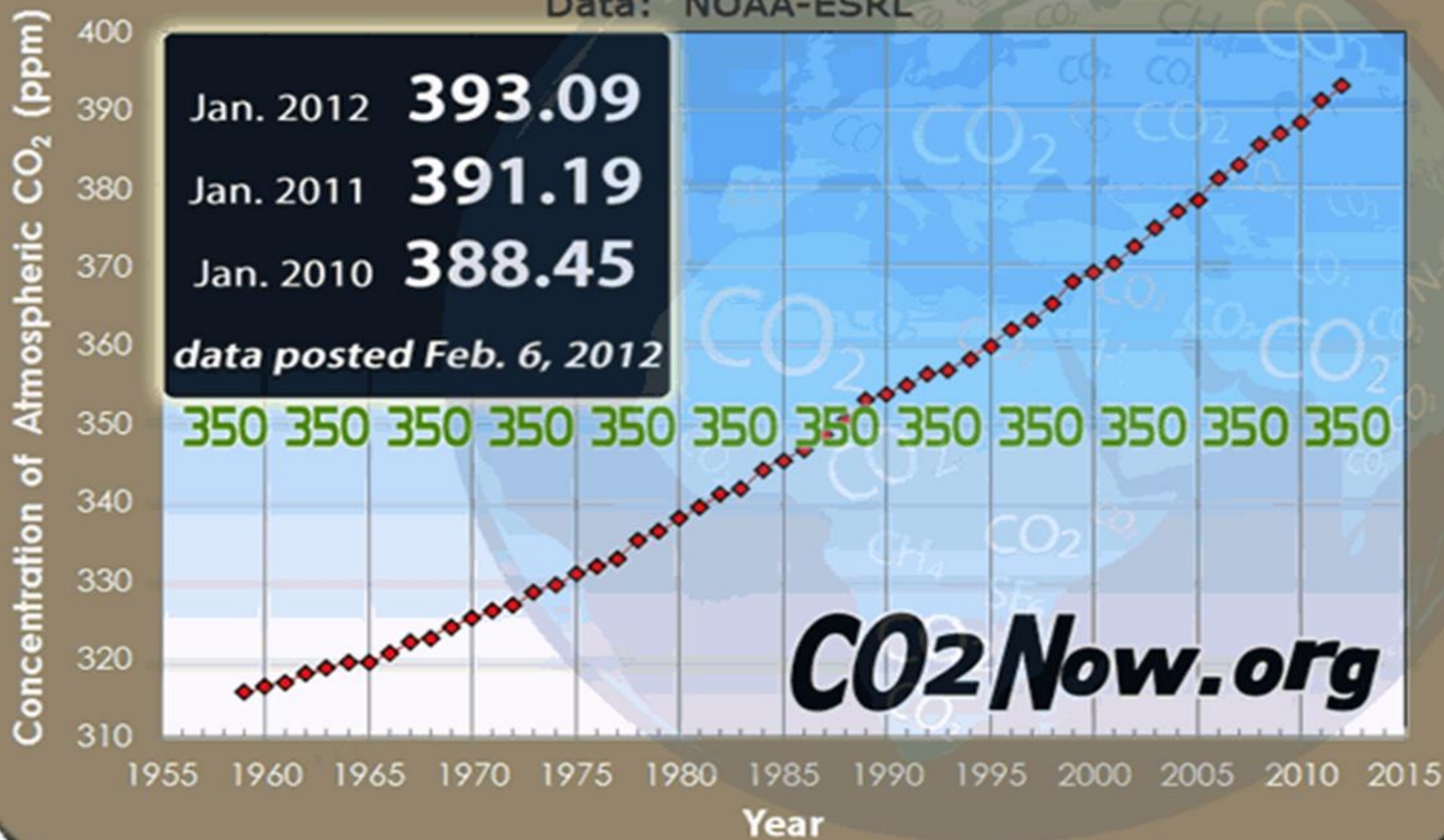
Kevin Trenberth

Atmospheric CO₂

January 1959 - January 2012

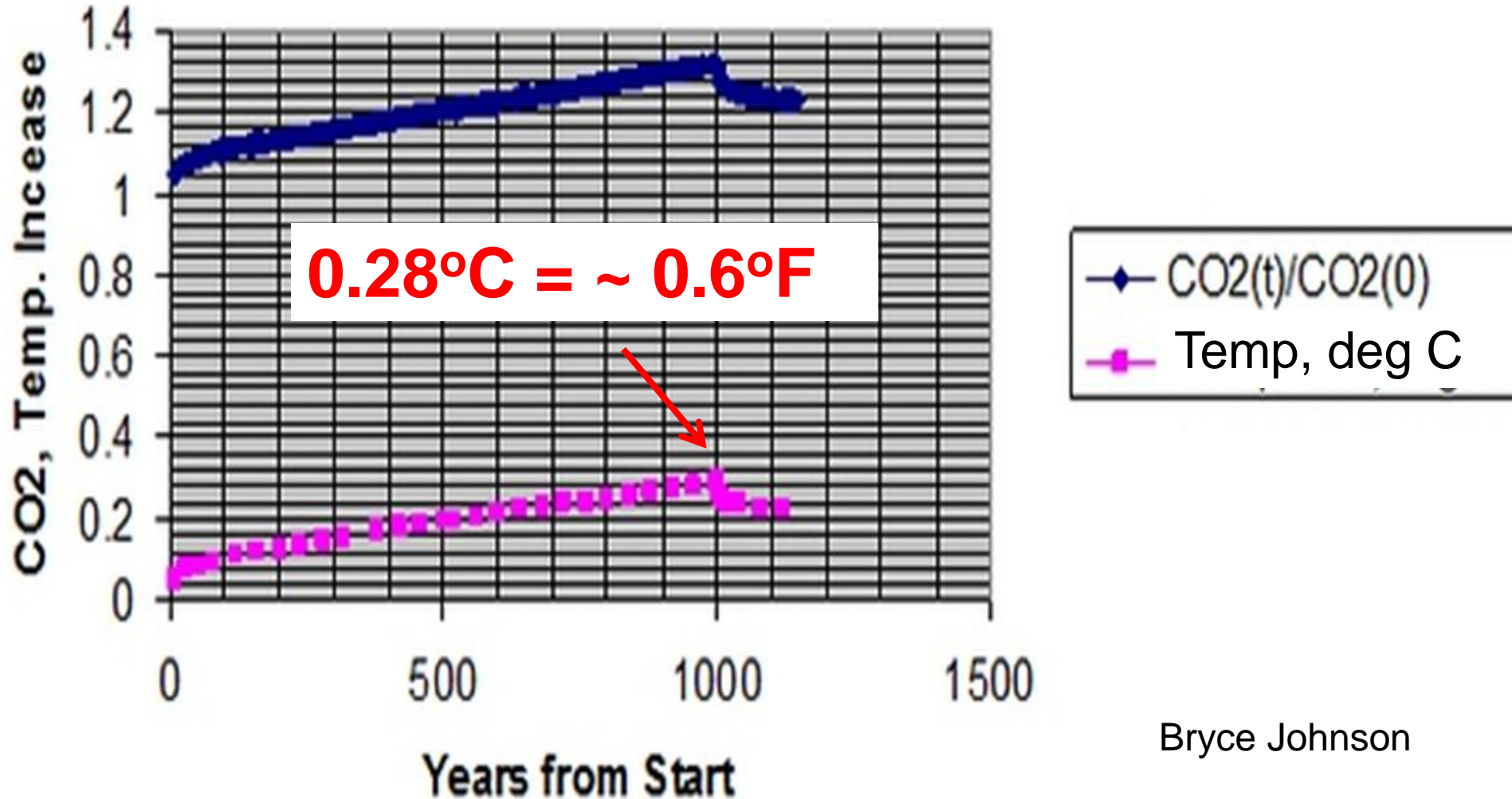
January CO₂ | Year Over Year | Mauna Loa Observatory

Data: NOAA-ESRL



CO2 and Temperature Increase from 10 pg Carbon Added to Atmosphere Per Year

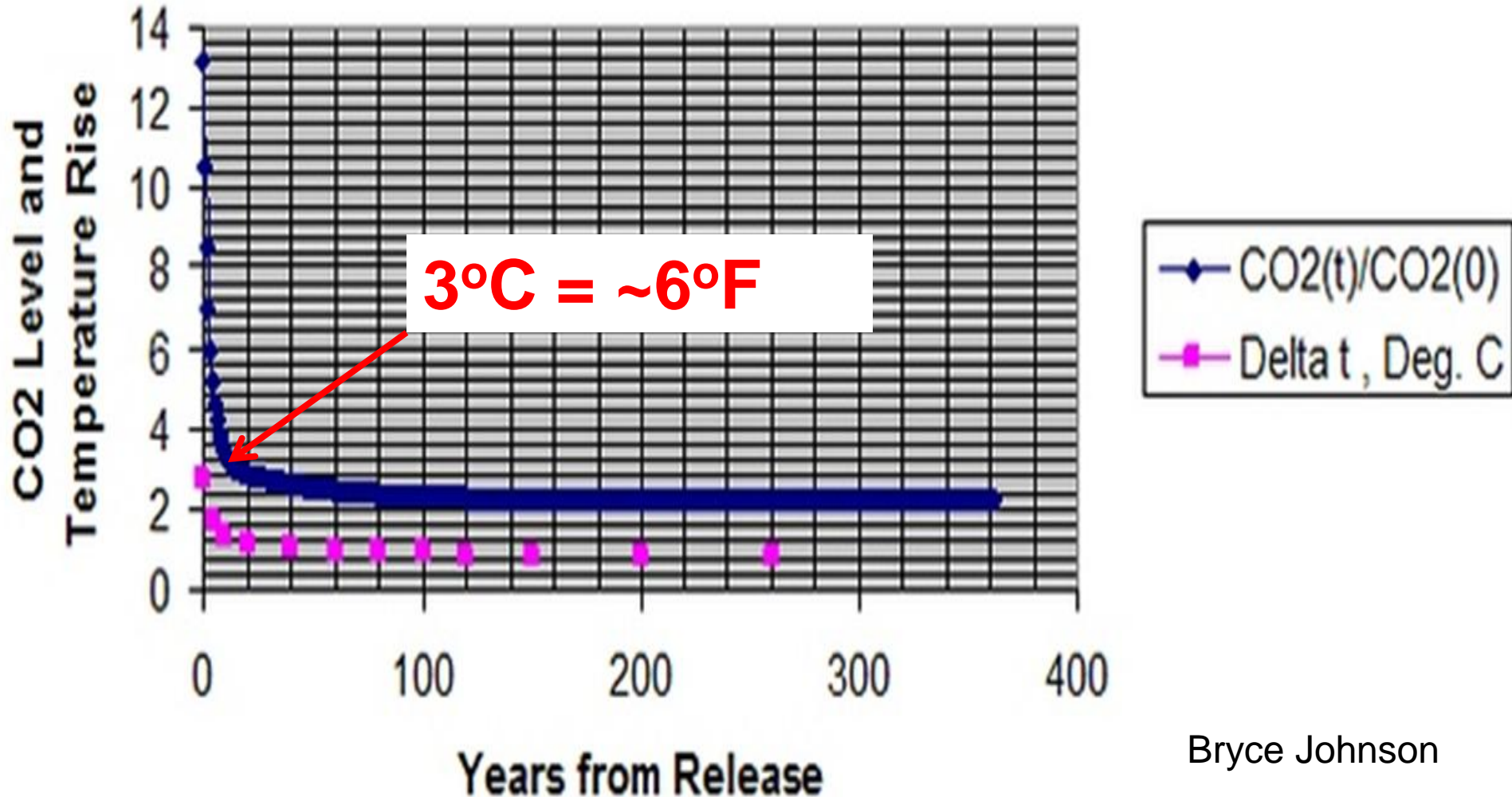
1 petagram (pg) = 1 billion metric tons of carbon



Bryce Johnson

CO2 Level and Temperature Rise for Instant Burnup of World's Fossil Fuels

10,000 petagram (pg) added = 10,000 billion metric tons of carbon



Bryce Johnson

STATEMENTS FROM SCRIPTURE

Earth will be normal

While the earth remaineth, seedtime and harvest, and cold and heat, and summer and winter, and day and night shall not cease. (Gen. 8:22)

Lord's return to surprise many

But the day of the Lord will come as a thief in the night... (II Peter 3:10)

STATEMENTS FROM SCRIPTURE

We are to be Stewards

...Be fruitful, and multiply, and replenish the earth, and subdue it...

(Gen. 1:27)

No more Global Flood

...the waters shall no more become a flood to destroy all flesh...

(Gen. 9:15)

Conclusions

- Global warming has been occurring for over 100 years.
- The warming may only be short-term.
- The warming is probably due to natural causes.
- Man probably contributes a small part.
- The cause still needs to be identified.
- One theory shows great promise: Solar activity modulates galactic cosmic radiation, decreases low-level cloud cover, and warms the atmosphere.
- The insertion of even large amounts of CO₂ causes minimal warming

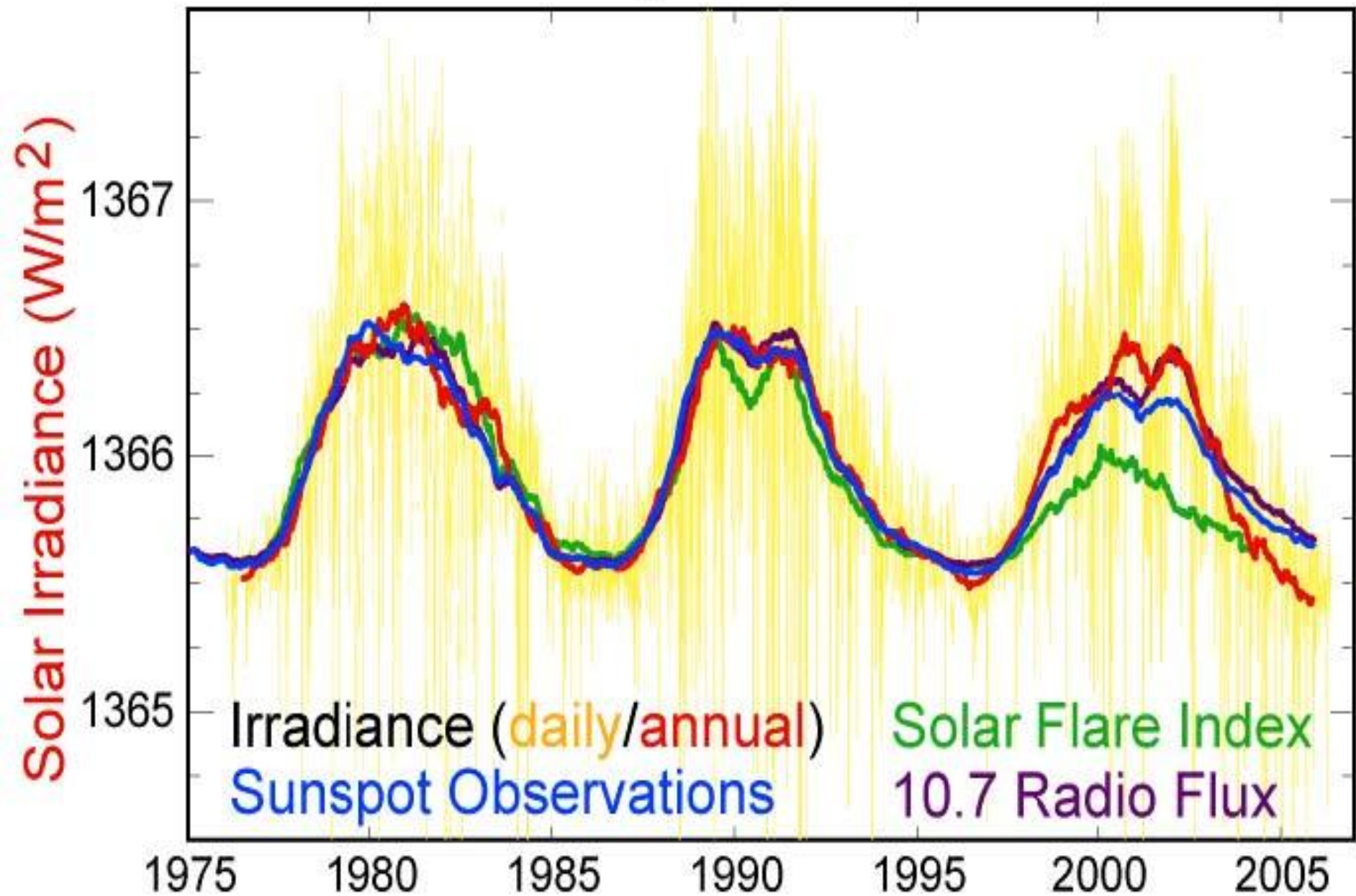


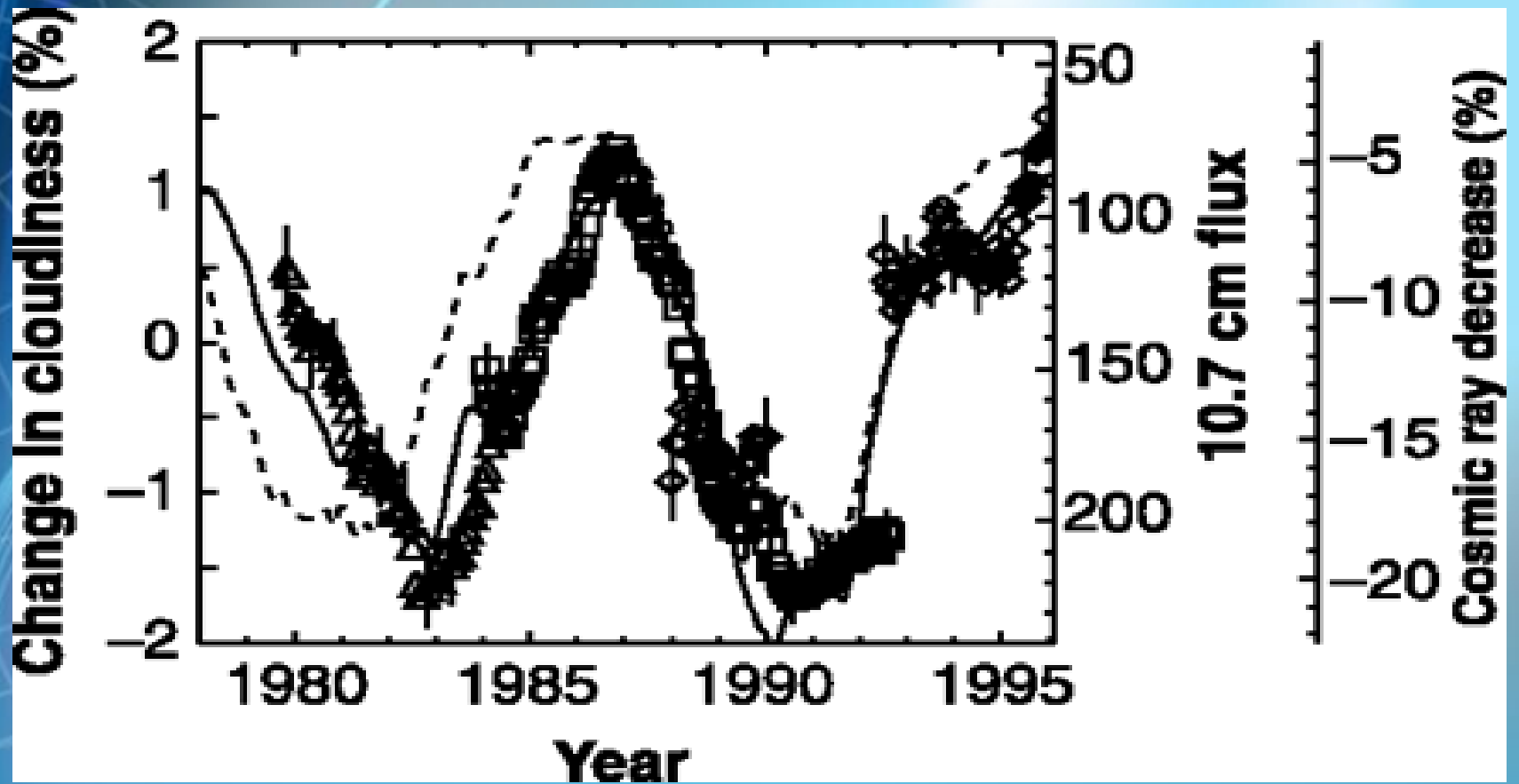
INSTITUTE
for CREATION
RESEARCH

Some Like It Hot: The Book

- 1. Our Charge as Stewards
- 2. Evidence for global warming
- 3. Al Gore's Explanation
- 4. Does CO₂ explain the warming?
- 5. A new theory
- 6. The Big Freeze
- 7. Hypercanes
- 8. Glaciers
- 9. Engineering planet earth
- 10. Why the hysteria?

Solar Cycle Variations





Changes in cloud cover (Triangles, Squares, Diamonds) compared with the variation in cosmic ray fluxes (solid curve) and 10.7 cm solar flux (broken curve). Data is from Nimbus 7 and Defense Meteorological Satellite Program (DMSP) (SH over oceans) and International Satellite Cloud Climatology Project (ISCCP) over oceans with the tropics excluded. All data smoothed with a 12-month running mean. [Reprinted with permission from Rind, D. 2008, The Sun's Role in Climate Variations, *Science*, Vol. 296 (5568), p. 673.]

Weekly Ice Coverage for 2007 Season / Couverture des glaces hebdomadaire pour la saison 2007

Baffin Arctic / Arctique 481161

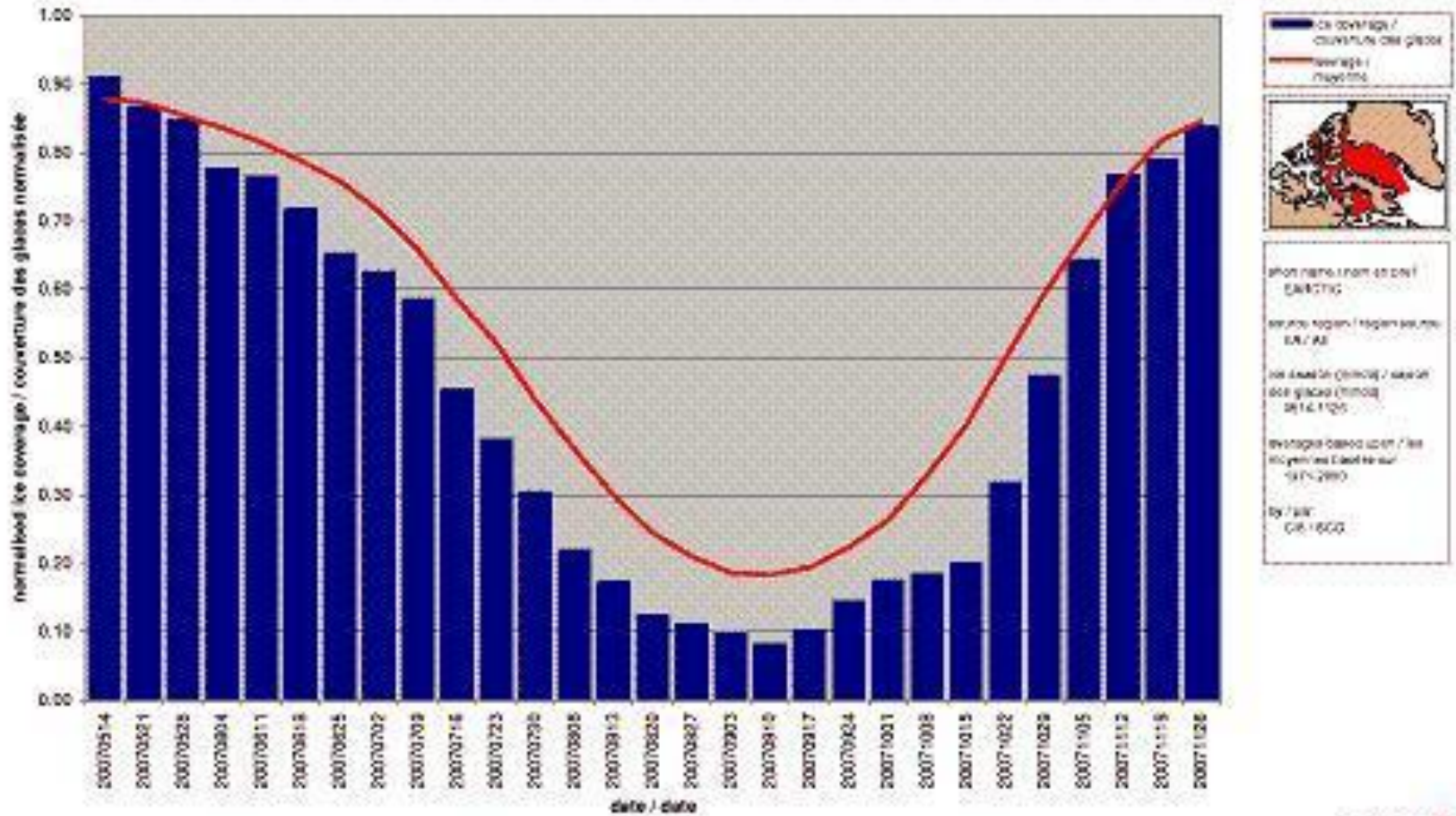






Photo name / nom du photo
 0481161

Source region / région source
 EA / AE

Ice Area in (km²) / surface
 des glaces (km²)
 2614.1125

Photo taken on / le
 10/11/2007

by / par
 GIL / GCG

May

September

November







IPCC Conference in Bali, December 2007



